

LIGHTING CATALOGUE



YOUR LIGHTING IS OUR BUSINESS

Whatever you want to achieve, Clipsal has a solution for all residential, commercial and industrial lighting applications. Combining both functionality and stylish designs into every product, Clipsal's lighting catalogue **makes the choice easy.**



CONTENTS

ENERGY SAVING	4
FLUORESCENT	6
Fluorescent battens.....	7
Batten accessories.....	11
Weatherproof battens	12
Toughnut.....	13
Fluorescent T-bars	14
Circular fluorescent.....	16
Exterior fluorescent.....	17
ENERGY EFFICIENT LUMINAIRES	18
Luminaires.....	19
Telstra House case study.....	21
FLOODLIGHTS	22
Metal halide floodlights	23
Tungsten halogen floodlights.....	24
LOW AND HIGH BAYS	26
Low bays	27
High bays	28
High bay accessories.....	30
EXIT AND EMERGENCY LIGHTING	32
Exit	33
Emergency	34
DOWNLIGHTS	36
LED downlight kits.....	37
Compact fluorescent downlights.....	39
Enclosed downlights	41
Enclosed low voltage downlights	42
IRC downlights	44
Low voltage downlights.....	45
Saturn downlights.....	46
Bathroom downlights	47
Square low voltage downlight fixtures	48
PL downlights.....	49
PL downlight accessories	50
Cabinet lighting	51
LED LIGHTING	52
LED downlight kits.....	53
LED stair/wall low level lighting.....	54
IP65 rated LED lighting	55
LED cabinet lighting	57
LED strip kits 12V	58
LED marker lights 12V	59
EXTERIOR LIGHTING	60
Bulkhead exterior lighting	61
Exterior wall lighting.....	63
DALI CONTROL	66
LIGHTING ACCESSORIES	68
Low voltage downlight transformers	69
Lamps.....	69
Surface sockets	69
Fluorescent starters	69
Lamp holders	70
Batten holders.....	70
Ceiling roses	70
Lamp holder accessories.....	70
LIGHTING TERMINOLOGY	71

INTRODUCTION

YOUR LIGHTING IS OUR BUSINESS

Clipsal offers an extensive lighting range with a solution for all residential, commercial and industrial applications. Combining both functionality and style into every product, Clipsal's lighting range makes the choice easy.

Clipsal's comprehensive lighting range includes:

Commercial lighting: battens, diffused battens, T-bar recessed, plaster recessed and emergency lighting.

Industrial: high bays, low bays, floodlights and IP65 weatherproof.

Residential: IRC downlights, CFL and LED lighting.

Energy efficient lighting options are a core part of our range. The Clipsal lighting range focuses on energy savings by combining the latest in lighting technology with electronic controls that will optimise luminaire performance and reduce energy consumption and operating costs.

So no matter what your lighting requirements, Clipsal has you covered with a reliable, lighting solution.



Please Note

- *Ensure you have used the correct colour code when ordering your products.*
- *Product design and colour may vary from images provided.*
- *All photography is for illustration purposes only.*



ENERGY SAVING

Every day our world demands more; more power, more comfort, more reliability and control. In today's environment, the world requires the most energy efficient means possible, more for less. The leading electrical company in Australia, Clipsal, has long pioneered energy efficient solutions and products to enhance your home, office or building and save you money.

With Clipsal there is an opportunity to make the most of your energy, minimise your energy bills and still enjoy what technology offers. Please consider our green solutions when deciding on which products suit your needs.

For energy efficient products look for this symbol



ENERGY SAVING

LIGHTING STRATEGIES

Lighting plays a very important part in the home, office or building and the correct lighting needs to be chosen to suit various applications within these environments. Clipsal offers a comprehensive lighting range and advice on the correct use of different lamp types to create genuine energy savings. Our range includes fluorescent lighting, floodlights, high and low bays, downlights, LED lighting and exit and emergency lights. So no matter what your lighting requirements, Clipsal has you covered with a reliable, energy efficient lighting solution.

KNOW YOUR LIGHTING

LED LIGHTING

LED lighting is the most energy efficient and longest lasting lighting product on the market today. LED lighting is ideal for accent lighting in cabinets, under kitchen benches, pathways, staircases, corridors and stairwells. They're also a great energy saving option for bedrooms, living rooms, home theatres and dining rooms, and in most cases replace halogen lighting in these applications.

L681WH



L881WH



L506WH



L960W/12WH



LINEAR AND FLUORESCENT LIGHTING

Compact fluorescent lamps or CFLs are low energy, long life lamps. They are ideal for areas that require lighting for long periods and are infrequently switched; such as outside lighting, kitchens, studies, living areas, carparks, office developments, shopping centres, factories and public buildings. Fluorescent lamps provide excellent light output and are a great choice for general lighting within the home or commercial building.

CF22



WDB114



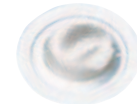
WP114



TB236EL



741/11WH



204WH



HALOGEN LIGHTING

Modern halogen IRC lamps are 30% more energy efficient than their predecessor with the same light output and long lamp life. Halogen lamps are dimmable and a great option to create mood lighting. They're ideal for living areas, bedrooms, home theatres, showrooms and boardrooms. Halogen lighting produces a warm comfortable light with a sparkle effect not found with other lighting types.

DLKLRG/FP



DLKLRF/FP



992SS





FLUORESCENT

Clipsal's fluorescent lighting range is ideal for any application where you require constant lighting for long periods of time, while consuming a minimal amount of energy.

Fluorescent lighting is still the most popular form of lighting in the world and with extensive developments in lamp technology and control gear it will continue to be the mainstream lighting offer for years to come.

Clipsal's fluorescent lighting range is available with T8, T5, PL or CFL lamps and can be provided with various dimming solutions to suit your project requirements. Should you require analogue, digital, DSI or DALI lighting control contact your nearest Clipsal Representative.



FLUORESCENT BATTENS

Applications

Suitable for residential, commercial and industrial applications, this range will provide optimum lighting for the lowest investment and running cost. Electronic high frequency models offer substantial energy savings. Surface mounted, conduit or chain mounted available to suit the project requirement.

Features

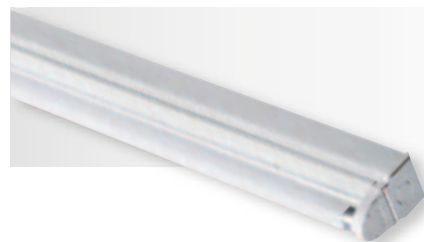
- Body formed in steel white powder coating
- Polycarbonate end caps and lamp holders
- Colour 840 lamps included
- Range of reflectors and wire guards to suit
- End-to-end mounting possible with pre-formed cable entry punch-outs
- Large terminal blocks for looping applications
- Control options available including DSI and DALI.



Electronic ballasts are more efficient in converting power used for the lamp. This reduces losses and increases efficiency by 15%-20% over traditional magnetic ballasts.

NARROW BARE BATTENS (ELECTRONIC) T8 LAMPS

Cat No.	Description	LxWxH
BB118EL	1x18W	620 x 60 x 98mm
BB218EL	2x18W	620 x 115 x 108mm
BB130EL	1x30W	920 x 55 x 98mm
BB136EL	1x36W	1230 x 60 x 98mm
BB236EL	2x36W	1230 x 115 x 108mm
BB158EL	1x58W	1530 x 60 x 98mm
BB258EL	2x58W	1530 x 115 x 108mm



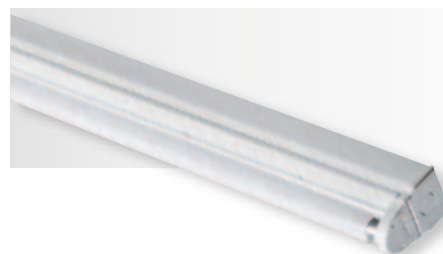
NARROW BARE BATTENS T8 LAMPS

Cat No.	Description	LxWxH
BB118	1x18W	620 x 55 x 98mm
BB218	2x18W	620 x 102 x 108mm
BB130	1x30W	920 x 55 x 98mm
BB136	1x36W	1230 x 55 x 98mm
BB236	2x36W	1230 x 102 x 85mm
BB158	1x58W	1530 x 55 x 98mm
BB258	2x58W	1530 x 102 x 108mm



NARROW BARE BATTENS (EMERGENCY) T8 LAMPS

Cat No.	Description	LxWxH
BB118EM	1x18W	620 x 60 x 98mm
BB218EM	2x18W	620 x 115 x 108mm
BB136EM	1x36W	1230 x 60 x 98mm
BB236EM	2x36W	1230 x 115 x 108mm



FLUORESCENT BATTENS

WIDE PROJECT BATTENS T8 LAMPS

Cat No.	Description	LxWxH
WB118	1x18W	620 x 65 x 80mm
WB218	2x18W	620 x 120 x 80mm
WB136	1x36W	1230 x 65 x 80mm
WB236	2x36W	1230 x 120 x 80mm
WB158	1x58W	1530 x 65 x 80mm
WB258	2x58W	1530 x 120 x 80mm



WIDE PROJECT BATTENS T5 LAMPS

Cat No.	Description	LxWxH
WB114T5	1x14W	570 x 65 x 70mm
WB214T5	2x14W	570 x 120 x 70mm
WB128T5	1x28W	1170 x 65 x 70mm
WB228T5	2x28W	1170 x 120 x 70mm



WIDE PROJECT BATTENS (ELECTRONIC) T8 LAMPS

Cat No.	Description	LxWxH
WB118EL	1x18W	620 x 65 x 80mm
WB218EL	2x18W	620 x 120 x 80mm
WB136EL	1x36W	1230 x 65 x 80mm
WB236EL	2x36W	1230 x 120 x 80mm
WB158EL	1x58W	1530 x 65 x 80mm
WB258EL	2x58W	1530 x 120 x 80mm



WIDE PROJECT BATTENS (EMERGENCY) T8 LAMPS

Cat No.	Description	LxWxH
WB118EM	1x18W	620 x 65 x 80mm
WB218EM	2x18W	620 x 120 x 80mm
WB136EM	1x36W	1230 x 65 x 80mm
WB236EM	2x36W	1230 x 120 x 80mm



FLUORESCENT BATTENS

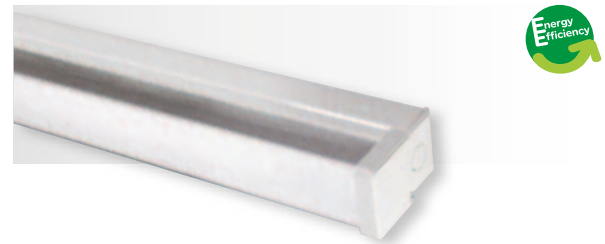
NARROW DIFFUSED BATTENS T8 LAMPS

Cat No.	Description	LxWxH
DB118	1x18W	620 x 60 x 98mm
DB218	2x18W	620 x 115 x 108mm
DB136	1x36W	1230 x 60 x 98mm
DB236	2x36W	1230 x 115 x 108mm



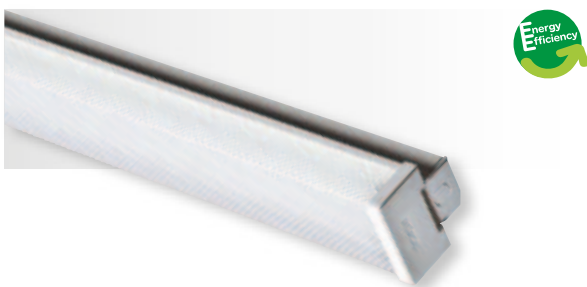
NARROW DIFFUSED LINEAR BATTENS T8 LAMPS

Cat No.	Description	LxWxH
DB118FREL	1x18W	620 x 60 x 98mm
DB218FREL	2x18W	620 x 115 x 108mm
DB136FREL	1x36W	1230 x 60 x 98mm
DB236FREL	2x36W	1230 x 115 x 108mm



NARROW DIFFUSED BATTENS (ELECTRONIC) T8 LAMPS

Cat No.	Description	LxWxH
DB118EL	1x18W	620 x 60 x 98mm
DB218EL	2x18W	620 x 115 x 108mm
DB136EL	1x36W	1230 x 60 x 98mm
DB236EL	2x36W	1230 x 115 x 108mm
DB158EL	1x58W	1530 x 60 x 98mm
DB258EL	2x58W	1530 x 115 x 108mm



NARROW DIFFUSED BATTENS (EMERGENCY) T8 LAMPS

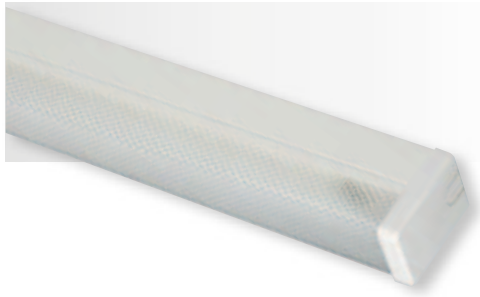
Cat No.	Description	LxWxH
DB118EM	1x18W	620 x 60 x 98mm
DB218EM	2x18W	620 x 115 x 108mm
DB136EM	1x36W	1230 x 60 x 98mm
DB236EM	2x36W	1230 x 115 x 108mm



FLUORESCENT BATTENS

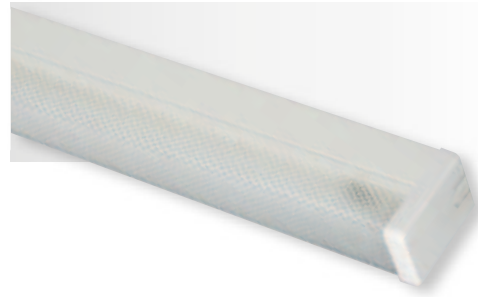
WIDE PROJECT DIFFUSED BATTENS T8 LAMPS

Cat No.	Description	LxWxH
WDB118	1x18W	620 x 70 x 95mm
WDB218	2x18W	620 x 125 x 95mm
WDB136	1x36W	1230 x 70 x 95mm
WDB236	2x36W	1230 x 125 x 95mm
WDB158	1x58W	1530 x 70 x 95mm
WDB258	2x58W	1530 x 125 x 95mm



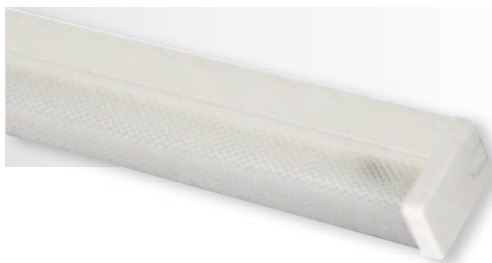
WIDE PROJECT DIFFUSED BATTENS (ELECTRONIC) T8 LAMPS

Cat No.	Description	LxWxH
WDB118EL	1x18W	620 x 60 x 98mm
WDB218EL	2x18W	620 x 115 x 108mm
WDB136EL	1x36W	1230 x 60 x 98mm
WDB236EL	2x36W	1230 x 115 x 108mm
WDB158EL	1x58W	1530 x 60 x 98mm
WDB258EL	2x58W	1530 x 115 x 108mm



WIDE PROJECT DIFFUSED BATTENS T5 LAMPS

Cat No.	Description	LxWxH
WDB114	1x14W	575 x 70 x 92mm
WDB214	2x14W	575 x 125 x 92mm
WDB128	1x28W	1175 x 70 x 95mm
WDB228	2x28W	1175 x 125 x 95mm



WIDE PROJECT DIFFUSED BATTENS (EMERGENCY) T8 LAMPS

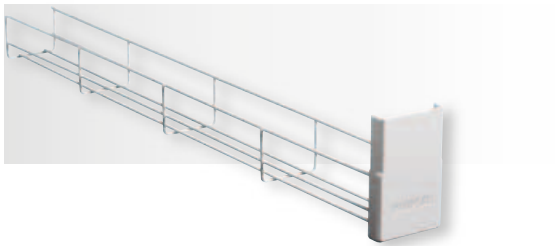
Cat No.	Description	LxWxH
WDB118EM	1x18W	620 x 60 x 98mm
WDB218EM	2x18W	620 x 115 x 108mm
WDB136EM	1x36W	1230 x 60 x 98mm
WDB236EM	2x36W	1230 x 115 x 108mm



BATTEN ACCESSORIES

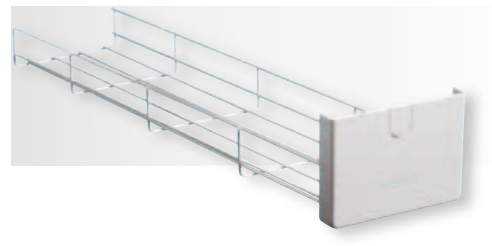
WIRE GUARD TO SUIT T8 BATTEN

Cat No.	Description	Length
WG118	1x18W	620mm
WG218	2x18W	620mm
WG136	1x36W	1230mm
WG236	2x36W	1230mm



WIRE GUARD TO SUIT WIDE BODY PROJECT BATTEN - T8

Cat No.	Description	Length
WWG114	1x14W	570mm
WWG214	2x14W	570mm
WWG128	1x128W	1170mm
WWG228	2x228W	1170mm



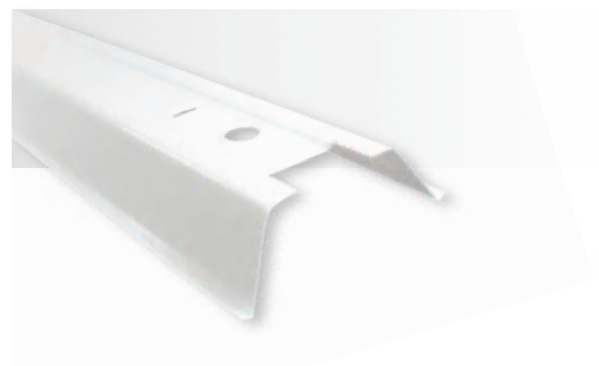
WIRE GUARD TO SUIT WIDE BODY PROJECT BATTEN - T8

Cat No.	Description	Length
WWG118	1x18W	620mm
WWG218	2x18W	620mm
WWG136	1x36W	1230mm
WWG236	2x36W	1230mm



REFLECTORS GENERAL PURPOSE INDUSTRIAL STYLE - OPEN ENDED

Cat No.	Description	Length
BR1/236	To suit BB136 and BB236 T8 narrow batten	615mm



WEATHERPROOF BATTENS

Applications

For exterior lighting in commercial applications such as security, factories, warehouses and public buildings, offering excellent illumination in areas subject to the weather.

Features

- Stainless steel lockable latches supplied as standard
- Polycarbonate base and diffuser
- IP65 rated
- Gear tray 0.5mm powder coated steel
- High quality gasket
- Cable entry and grommets at both ends
- Suspension mounted stainless steel kit supplied
- Large terminal blocks for looping applications
- Control options available in DSI and DALI on request
- Emergency inverters on request.

TYPHOON T5 LAMPS

Cat No.	Description	LxWxH
WP114	1x14W	620 x 70 x 85mm
WP214	2x14W	620 x 110 x 85mm
WP128	1x28W	1220 x 70 x 85mm
WP228	2x28W	1220 x 100 x 85mm
WP135	1x35W	1510 x 70 x 85mm
WP235	2x35W	1510 x 100 x 85mm



TYPHOON T8 LAMPS

Cat No.	Description	LxWxH
WP118	1x18W	660 x 105 x 110mm
WP218	2x18W	660 x 100 x 110mm
WP136	1x36W	1270 x 105 x 110mm
WP236	2x36W	1270 x 100 x 110mm
WP136EL	1x36W HF electronic	1270 x 105 x 110mm
WP236EL	2x36W HF electronic	1270 x 100 x 110mm
WP136EM	1x36W emergency	1270 x 105 x 110mm
WP236EM	2x36W emergency	1270 x 100 x 110mm



TROPIC T8 LAMPS (ELECTRONIC) PROJECT

Cat No.	Description	LxWxH
WPT118	1x18W	660 x 105 x 110mm
WPT218	2x18W	660 x 100 x 110mm
WPT136	1x36W	1270 x 105 x 110mm
WPT236	2x36W	1270 x 100 x 110mm



TOUGHNUT

Applications

For exterior applications in commercial environments such as security, factories, warehouses and public buildings, offering a degree of protection from abuse.

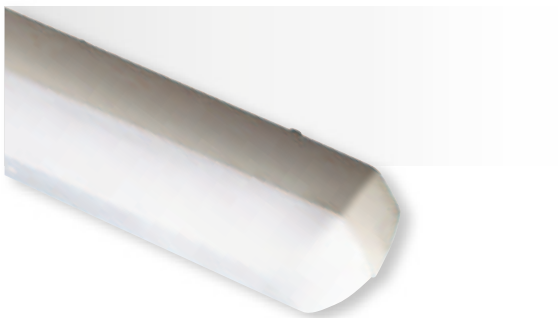
A very plain but functional fitting for warehouse and factory projects.

Features

- IP65 rated
- Stainless steel screws
- Polycarbonate base and diffuser
- HPF0.9
- Gear tray 0.5mm powder coated steel
- High quality gasket
- Large terminal blocks for looping applications
- Control options available in DSI and DALI on request.

TOUGHNUT - T8

Cat No.	Description	LxWxH
TUFF118	1x18W	630 x 112 x 120mm



FLUORESCENT T-BARS

Applications

Suitable in commercial office developments or shopping centres using standard T-bar ceilings. Also suitable for solid plaster ceilings with optional plaster frame kit.

Features

- Shallow mounting depth for metric T-bar applications
- Sits on top of T-rails
- Complete with 1.5M flex and plug
- Body formed in steel white powder coating
- Colour 840 lamps included
- Pattern 12 acrylic flat sheet (other patterns on request)
- Large terminal blocks for looping applications
- Control options available in DSI and DALI
- Louvre models with specula anodised aluminium parabolic louvres and ribbed anodised cross blades
- Plaster frame kits available to suit.

PRISMATIC DIFFUSED T8

Cat No.	Description	LxWxH
TB218H	2x18W	600 x 300 x 70mm
TB236H	2x36W	1200 x 300 x 70mm
TB236HEM	2x36W emergency inverters	1200 x 300 x 70mm
TB236EL	2x36W electronic	1200 x 300 x 70mm
TBE236EL	2x36W economy	1200 x 300 x 70mm
TBW236H	2x36W wide	1200 x 600 x 70mm
TBW236EL	2x36W wide electronic	1200 x 600 x 70mm



PRISMATIC DIFFUSED T5

Cat No.	Description	LxWxH
TB214	2x14W HF electronic	611 x 297 x 65mm
TB228	2x28W HF electronic	1222 x 297 x 65mm



Centra Plaza, Department of Industry,
Tourism and Resources, Canberra.

FLUORESCENT T-BARS

SEMI LOW BRIGHT LOUVRES - T8

Cat No.	Description
SLB218SEL	2x18W HF electronic
SLB236SEL	2x36W HF electronic



PLASTER FRAMES

Cat No.	Description	LxW
PRF218	To suit T-bar 2x18W	600 x 300mm
PRF236	To suit T-bar 2x36W	1200 x 300mm



Ceiling Cut-out

- PRF 218** = 605 x 305mm
- PRF 236** = 1205 x 305mm

CIRCULAR FLUORESCENT

Applications

Suitable for both residential and commercial projects for lighting in kitchens, bathrooms and toilets.

Available in three wattages, these fixtures suit most size rooms. A very plain but functional fitting.

Features

- Matt acrylic formed diffuser
- Ease of lamp replacement diffusers latching
- Large terminal connector with cover
- Steel base plate powder coated white
- Long lamp life
- With cool white lamps
- Wall or ceiling mounting.

CIRCULAR FLUORESCENT T5

Cat No.	Description	Diameter
CFT522	22W	280mm
CFT532	32W	386mm
CFT540	40W	470mm



CIRCULAR FLUORESCENT T9

Cat No.	Description	Diameter
CF22	22W	280mm
CF32	32W	386mm
CF40	40W	470mm



CIRCULAR FLUORESCENT 2D

Cat No.	Description	Diameter
528DWE	28W	432mm
538DWE	38W	432mm



EXTERIOR FLUORESCENT

Applications

Suitable for stairwells, walkways and general amenity/ security areas.

Features

- IP65 rated
- Impact resistant polycarbonate body and diffuser
- Hinged gear tray for ease of installation
- Captive diffuser screws
- Lamp included
- Non-dimmable.

CIRCULAR EXTERIOR FLUORESCENT 2D ROUND

Cat No.	Description	Diameter
BHRC28	28W clear diffuser	285mm
BHRO28	28W opal diffuser	285mm



EXTERIOR FLUORESCENT 2D SQUARE

Cat No.	Description	LxW
BHSC28	28W clear diffuser	255 x 255mm
BHSO28	28W opal diffuser	255 x 255mm





ENERGY EFFICIENT LUMINAIRES

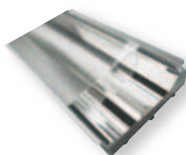
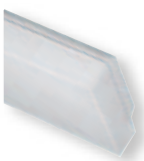
Clipsal's range of KW/2 high performance reflectors are designed specifically to maximise energy efficiency and provide a complete solution for linear commercial lighting.

Our comprehensive range of energy efficient commercial lighting offers a wide range of solutions for general use through to specific applications. KW/2 is not just a lighting reflector system, it's also a unique patented design that enhances luminaire performance.

The surface of KW/2 reflectors is lined with pure silver and highly polished. This produces a total reflectance of 97%, which provides a better quality light output with substantial energy savings.



KW/2 reflectors provide up to 50% higher luminaire efficiency and give a spectacular reflectance of 97%. They will halve the number of fluorescent tubes required in an installation, while still meeting performance requirements.



ENERGY EFFICIENT LUMINAIRES

Applications

Energy efficient luminaire with internal KW/2 optically engineered, high performance reflector system allows you to cut your lamp usage in half while still meeting performance requirements.

Features

- Body formed in white powder coated steel
- High performance KW/2 optically engineered reflector to maximise light output ratio (LOR)
- Non-dimmable constant wattage electronic ballast
- Colour 840 lamps included
- K19 diffuser as standard
- Control option available: DALI/DSI
- Emergency inverters on request.

RECESSED T-BAR TROFFERS

Cat No.	Description	LxWxH
TB118M4Y19	KW/2 reflector, 1 x 18W	600 x 300 x 70mm
TB136M4Y19	KW/2 reflector, 1 x 36W	1230 x 300 x 70mm
TB158M4Y19	KW/2 reflector, 1 x 58W	1530 x 300 x 70mm

Applications

Wide body energy efficient prismatic surface mounted series, with internal KW/2 optically engineered reflector system, provides superior performance from a single lamp source to suit any commercial application.

Features

- Wide body formed in steel white powder coating
- Extruded and roll formed profile in 100% acrylic
- Sonically welded end caps
- High performance KW/2 optically engineered reflector to maximise light output ratio (LOR)
- Polycarbonate lamp holders
- Non-dimmable constant wattage electronic ballast
- Colour 840 lamps included
- Pre-formed cable entry punch-outs
- Large terminal blocks for looping applications
- Control option available: DALI/DSI
- Emergency inverters on request.

SURFACE MOUNTED WIDE BODY PRISMATIC LUMINAIRE

Cat No.	Description	LxWxH
SMD118M4	KW/2 reflector, 1 x 18W	648 x 306 x 92mm
SMD136M4	KW/2 reflector, 1 x 36W	1258 x 306 x 92mm
SMD158M4	KW/2 reflector, 1 x 58W	1559 x 306 x 92mm
SMD114M4	KW/2 reflector, 1 x 14W	605 x 306 x 92mm
SMD128M4	KW/2 reflector, 1 x 28W	1205 x 306 x 92mm
SMD154M4	KW/2 reflector, 1 x 54W	1559 x 306 x 92mm



ENERGY EFFICIENT LUMINAIRES

Applications

Wide body energy efficient prismatic diffused batten series, with internal KW/2 optically engineered reflector system, provides superior performance from a single lamp source to suit any commercial application.

Features

- Wide body formed in white powder coating
- High performance KW/2 optically engineered reflector to maximise light output ratio (LOR)
- Polycarbonate end caps and lamp holders
- Non-dimmable constant wattage electronic ballast
- Colour 840 lamps included
- End-to-end mounting
- Pre-formed cable entry punch-outs
- Large terminal blocks for looping applications
- Control option available: DALI/DSI
- Emergency inverters on request.

Applications

Wide body energy efficient wire guarded series, with internal KW/2 optically engineered reflector system, provides superior performance from a single lamp source to suit any commercial application.

Features

- Wide body formed in white powder coated steel
- High performance KW/2 optically engineered reflector to maximise light output ratio (LOR)
- Polycarbonate end caps and lamp holders
- Non-dimmable constant wattage electronic ballast
- Colour 840 lamps included
- Supplied complete with wire guards
- End-to-end mounting
- Pre-formed cable entry punch-outs
- Large terminal blocks for looping applications
- Control option available: DALI/DSI
- Emergency inverters on request.

DIFFUSED BATTENS – WIDE BODY

Cat No.	Description	LxWxH
WDB118M4	KW/2 reflector, 1 x 18W	620 x 70 x 95mm
WDB136M4	KW/2 reflector, 1 x 36W	1230 x 70 x 95mm
WDB158M4	KW/2 reflector, 1 x 58W	1530 x 70 x 95mm

WIRE GUARDED BATTENS – WIDE BODY

Cat No.	Description	LxWxH
WBWG118M4	KW/2 reflector, 1 x 18W	618 x 69 x 93mm
WBWG136M4	KW/2 reflector, 1 x 36W	1227 x 69 x 93mm
WBWG158M4	KW/2 reflector, 1 x 58W	1528 x 69 x 93mm

Applications

A range of recessed clean room troffers with a high build quality for maximum protection are available. Fittings are front access and dust proof, assisting to maintain a dust free environment.

Features

- Shallow mounting depth
- IP65 (below) / IP54 (from above)
- Simple to open and close front frame
- Designed so that particles can not accumulate on surfaces
- Non-dimmable constant wattage electronic ballast
- K19 diffuser as standard
- Colour 840 lamps included
- Control option available: DALI/DSI

Applications

A range of surface mount clean room troffers with a high build quality for maximum protection are available. Fittings are front access and dust proof, assisting to maintain a dust free environment.

Features

- Shallow mounting depth
- IP65 (below) / IP54 (from above)
- Simple to open and close front frame
- Designed so that particles can not accumulate on surfaces
- Non-dimmable constant wattage electronic ballast
- K19 diffuser as standard
- Colour 840 lamps included
- Control option available: DALI/DSI

RECESSED CLEAN ROOM TROFFERS

Cat No.	Description	LxWxH
RC306/114M4	KW/2 reflector, 1 x 14W	300 x 600mm
RC306/118M4	KW/2 reflector, 1 x 18W	300 x 600mm
RC306/128M4	KW/2 reflector, 1 x 28W	300 x 1200mm
RC306/136M4	KW/2 reflector, 1 x 36W	300 x 1200mm

SURFACE MOUNT CLEAN ROOM TROFFERS

Cat No.	Description	LxWxH
SC306/114M4	KW/2 reflector, 1 x 14W	300 x 600mm
SC306/118M4	KW/2 reflector, 1 x 18W	300 x 600mm
SC306/128M4	KW/2 reflector, 1 x 28W	300 x 1200mm
SC306/136M4	KW/2 reflector, 1 x 36W	300 x 1200mm

TELSTRA HOUSE CASE STUDY



Telstra House, centrally located on Pirie Street, Adelaide was built in 1987. It is a 24 storey high rise building tenanted by Australia's largest telecommunications company, Telstra Corporation. Telstra House comprises general office accommodation, a call centre and executive office accommodation throughout the building.

THE PROJECT

At the time of this project Clipsal Energy Solutions (previously trading as Efficient Energy Systems) had already successfully completed a number of high profile energy saving projects for Telstra. It was of no surprise when the Facility Manager of Coffey Environments, environmental consultants for the United Group Services, invited Efficient Energy Systems (EES) to participate in the open tender for the supply and installation of an energy efficient lighting solution. EES was ultimately successful in winning the tender with a lighting solution that promised exceptional energy savings.

THE CHALLENGE

The tender called for the lighting on 16 floors to be upgraded, representing a total floor area of 13,440 square metres and a total of 2,363 luminaires required upgrading. The existing luminaires were recessed troffers with return air

slots and framed prismatic diffusers at 2.4 metre centres. The luminaires were fitted with 2 x 36W tri-phosphor tubes and low loss magnetic ballasts resulting in a total energy consumption of 84W and lighting power density of 14.6W/m². This arrangement resulted in over illumination of the office space, which caused headaches, complaints and loss of productivity by the building's occupants.

The challenge here was to reduce the overall energy consumption, as well as optimising light output, indoor environmental quality and reliability with the new lighting solution.

THE SOLUTION

In order to minimise disruption to the existing spatial separation of the light fittings, and reduce project costs, it was decided to upgrade the existing light fittings by retrofitting these with high performance KW/2 full specular optically engineered reflectors. The KW/2 reflector was customised to fit the existing fitting with the lamp centrally placed at the focal point of the reflector producing 20 per cent more downward light than the previous design, while providing more useful light.

The 2 x 36W tri-phosphor tubes and low loss magnetic ballasts were replaced with a single 36W tri-phosphor lamp and professional start electronic ballast, with constant lamp power output. This resulted in energy consumption being reduced by more than 50 per cent to 35W per fitting, with the lighting power density reduced to less than 6.5W/m². In the process the lighting levels were reduced, which stabilised the number of complaints and loss of productivity.

All the lamps were replaced to achieve an even light intensity and colour uniformity throughout the work space, and to reduce future maintenance costs. In addition, lamps, ballasts and packaging removed from this project site were all separately recycled ensuing responsible environmental stewardship.

The installation and commissioning of the new lighting scheme was expertly under-taken by North East Electrical within budget and schedule.

THE COST SAVINGS

The energy saving as a result of the lighting upgrade was 433,000 kWh per annum, while greenhouse gas emissions were reduced by 424 tonnes with an annual cost saving of \$39,000.

In addition to the energy savings, the lighting levels were uniform throughout, which resulted in an improved indoor environment and operator comfort. Finally, the new lighting scheme met with the requirements of AS/NZ1680 for lighting design and significantly exceeds the BCA benchmarks.

THE FACTS

Annual energy savings	433,000 kWh
Annual greenhouse gas savings	424 tonnes
Annual energy cost savings	\$39,000



FLOODLIGHTS

If you require outdoor lighting, Clipsal floodlights are perfect for any application where you require a large amount of lighting from one or more light sources. Clipsal's floodlight range comes in two lamp technologies for various floodlighting applications:

TUNGSTEN

Clipsal's tungsten halogen floodlights use a residential fitting and are suitable for general lighting purposes. The main advantage with tungsten halogen lighting is its ability to provide instant bright light when turned on and does not require a cooling off period before switching on again.

METAL HALIDE

Clipsal's metal halide floodlights offer the latest in lamp technology using a discharge gas lamp operated by control gear within the floodlight. Metal halide floodlights are ideal for applications where lighting is left on for long periods, while providing great energy saving benefits and long lamp operating hours.



METAL HALIDE FLOODLIGHTS

Applications

General area floodlighting applications to suit residential and commercial projects.

The halogen models offer extremely efficient operating costs, long lamp life and good colour rendering.

Most suited to car park, car yard and industrial floodlighting applications.

Features

- Die-cast body painted black
- Reflector specula aluminium
- Toughened front glass
- Integral control gear (MH models)
- HPF0.9 (MH models only)
- Stirrup nut protection cap (MH models only)
- Easy installation and lamp replacement with drop down glass front plate held with stainless steel or aluminium latches (MH models)
- Asymmetric reflectors (MH models only)
- IP54 and IP65 ratings
- Lamps included.



Clipsal metal halide floodlight lamps produce 65-115 lumens per watt, making them more efficient than incandescent, fluorescent or mercury vapour.

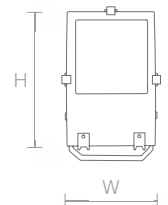
METAL HALIDE FLOODLIGHTS

Cat No.	Description
FL70	70W metal halide double ended Rx7s
FL150	150W metal halide double ended Rx7s



Standard Dimensions

Stand = 145mm
Height = 395mm (H)
Width = 225mm (W)



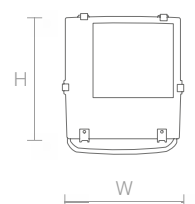
METAL HALIDE FLOODLIGHTS

Cat No.	Description
FL250	250W metal halide tubular E40
FL400	400W metal halide tubular E40



Standard Dimensions

Stand = 145mm
Height = 440mm (H)
Width = 410mm (W)



TUNGSTEN HALOGEN FLOODLIGHTS



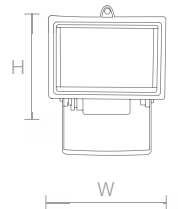
TUNGSTEN HALOGEN FLOODLIGHT

Cat No.	Description
CHF150	150W halogen Rx7



Standard Dimensions

Stand = 80mm
Height = 95mm (H)
Width = 135mm (W)



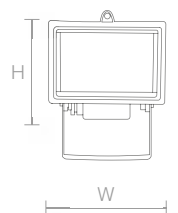
TUNGSTEN HALOGEN FLOODLIGHT

Cat No.	Description
CHF500	500W halogen Rx7



Standard Dimensions

Stand = 115mm
Height = 140mm (H)
Width = 185mm (W)



Australia's No.1 range of isolators



Why Weathershield?

- Fast fit-off
- Superior sealing
- Chemical resistant
- Protected rotary lever

For more information contact your Clipsal Representative,
call 1300 2025 25 or visit clipsal.com

clipsal.com



CLIPSAL[®]

by Schneider Electric



LOW AND HIGH BAYS

Clipsal's low and high bay lighting range is perfect for most commercial applications, providing quality light and superior energy efficiency, which makes them ideal for operating over long periods.

LOW BAYS

Clipsal low bay lighting is suitable for medium ceiling height industrial applications. Metal halide lamp technology provides optimum colour rendering and energy efficiency. Clipsal low bay lighting is also supplied complete with glass lens and guard, making them suitable for all low bay lighting applications.

HIGH BAYS

Clipsal high bay lights are ideal for general industrial lighting applications and use metal halide lamp technology to provide optimum colour rendering and energy efficiency. Clipsal high bay lighting is available with aluminium reflectors for greater optical control or acrylic reflectors to achieve upward lighting control, providing you with the perfect high bay lighting solution.



LOW BAYS

Applications

Suitable for ceiling heights of three to five metres, Clipsal's low bays provide high lighting levels thanks to their efficient and excellent colour rendering metal halide lamp technology.

Ideal for low ceiling sites, loading docks and warehouses.

Features

- Easy mounting system
- Powder coated steel construction
- Control gear mounted on removable tray
- Large terminal connectors
- Wire mesh as standard
- Glass sealed front as standard
- HPF0.9
- Easy access and ventilated gear housing
- Edison screw porcelain lamp holder
- Elliptical coated lamp included
- Uniform lighting distribution for medium ceiling heights.



Clipsal metal halide low and high bay lamps produce 65-115 lumens per watt, making them more efficient than incandescent, fluorescent or mercury vapour.

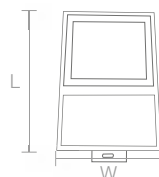
METAL HALIDE LOW BAY

Cat No.	Description
LBJ150MH	150W, E27, elliptical coated



Standard Dimensions

Width = 265mm (W)
Height = 125mm (H)
Length = 385mm (L)



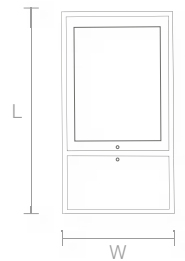
METAL HALIDE LOW BAY

Cat No.	Description
LB250MH	250W, E40, elliptical coated
LB400MH	400W, E40, elliptical coated



Standard Dimensions

Width = 330mm (W)
Height = 195mm (H)
Length = 600mm (L)



HIGH BAYS

Applications

Suitable for general high bay factory lighting, combining performance efficiency and price.

The metal halide lamp is one of the most efficient types of lighting available, offering excellent colour rendering for factories, loading bays and industrial applications.

Features

- Reflector ribbed aluminium
- Integral metal halide control gear
- HPF0.9
- Easy access and ventilated gear housing
- Flex and plug supplied and fitted
- E40 porcelain lamp holder
- Elliptical coated lamp included
- Suspension hook supplied
- Uniform lighting distribution for high ceiling heights
- Acrylic models offer vertical and upward lighting
- Acrylic drop lens available (only suitable for acrylic models).

T5 Models

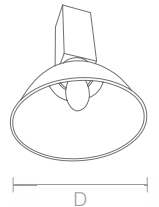
- Instant light output
- High frequency non-dimming electronic control gear
- High lumen output, very low operating costs
- Glass diffuser front
- Super pure aluminium reflector system
- Supplied with high output T5 lamps
- Able to operate with PIR or C-Bus control for instant switching.

METAL HALIDE - ALUMINIUM REFLECTOR

Cat No.	Description	Reflector
HB250MH	250W, E40 elliptical coated	Aluminium
HB400MH	400W, E40 elliptical coated	Aluminium



Standard Dimensions
Diameter = 600mm (D)

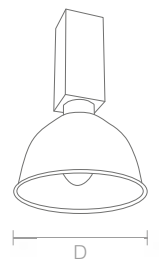


PROJECT METAL HALIDE

Cat No.	Description	Reflector
HBP400MH	400W	Aluminium



Standard Dimensions
Diameter = 600mm (D)



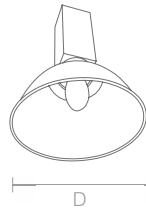
HIGH BAYS

METAL HALIDE - ACRYLIC REFLECTOR

Cat No.	Description	Reflector
HBA250MH	250W, E40 elliptical coated	Acrylic
HBA400MH	400W, E40 elliptical coated	Acrylic

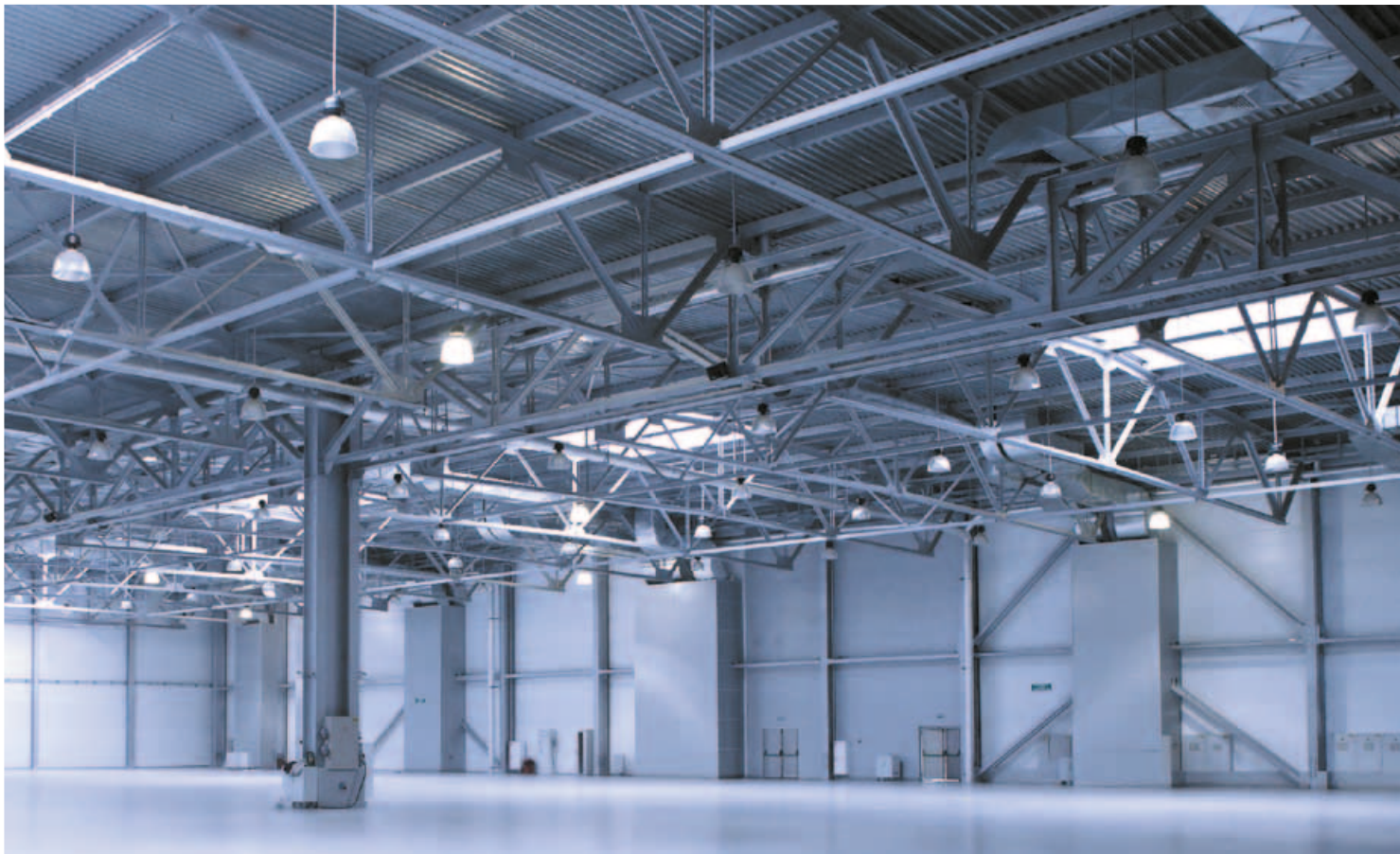


Standard Dimensions
Diameter = 600mm (D)



HIGH BAY ENERGY SAVING

Cat No.	Description
HB454T5	4 x 54 T5 lamps
HB654T5	6 x 54 T5 lamps



HIGH BAY ACCESSORIES

ACRYLIC ACCESSORIES

Cat No.	Description
HBAL	Acrylic lens



STANDARD ACCESSORIES

Cat No.	Description
HBGLSR	Glass lens
HBWGSR	Wire guard





“... only 56 Series can do his dirty work.”



Tony and his workmates manufacture 46,000 litres of fertilizer a day. Their switchgear is turned on and off more than 360 times a week, while continuously exposed to chemicals and the daily wash-down. They can't afford breakdowns, and depend on switchgear that can handle the harshest conditions, which is why they use 56 Series.

56 Series provides true performance in power and is manufactured from premium grade materials, specifically designed to handle the most extreme work environments. If you require switchgear for dirty work in harsh environments, insist on 56 Series.

56 Series superior features and benefits:

- 25% stronger socket cover.
- Redesigned socket cover latch – easier to operate.
- New pivot assembly strengthens cover.
- New cover gasket negates the need for #9 caps to maintain IP rating and improves ease of installation.
- Raised ON/OFF indicators – less prone to removal.
- Chemical resistant options to suit different applications.
- Laser printed labelling.

For more information or a brochure speak to your Clipsal Rep, call 1300 2025 25 or visit clipsal.com

clipsal.com

CLIPSAL[®]

by Schneider Electric



EXIT AND EMERGENCY LIGHTING

Clipsal's exit and emergency lighting range is the best option to safely guide people out of buildings, office spaces or department stores. These fixtures use advanced LED lamp technology that provides unsurpassed energy conservation with extended lamp life. Clipsal's exit and emergency lights are easy to install, which, combined with their modern design, sets them apart from any other exit and emergency lighting on the market.

DALI exit and emergency systems are available as a more advanced and cost effective means of monitoring the evacuation in today's modern building environment (refer to page 66 to read more about our DALIcontrol solution). DALI exit and emergency lights are also compatible with the Clipsal C-Bus system.



DLA Phillips Fox, photo courtesy of Northrop.

EXIT LIGHTING

Applications

Suitable for all exit applications, the Quicksmart range offers everything in one convenient package. Products can be wall or ceiling mounted.

Features - EXITSM

- 1.2W LED tube which provides longer life and lower power consumption
- Contains NiMH batteries; these are a greener alternative to NiCd batteries, which contain the heavy toxic metal 'cadmium'
- Uses a highly effective switch mode power supply which significantly reduces the power consumption compared to traditional exit sign products
- Supplied with complete set of replaceable decals so it suits almost any application
- An easily detachable bracket, which allows for easy maintenance.

Operational Information

General

Operational Voltage	220-240V
Operational Frequency	50/60Hz
Power Consumption	3.4W
Viewing Distance	24m

Battery

Type	High temperature nickel metal hydride
Capacity	1200mAh
Voltage	4.8V
Discharge Rating	2 hours



Clipsal exit lights utilise LED lamp technology that increases service life and reduces energy consumption through high frequency, switch mode power supplies that lower power losses.

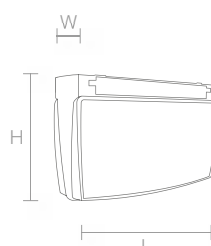
QUICKSMART

Cat No.	Description
EXITSM	Universal exit
EXITSMDALI	DALI control version



Standard Dimensions

Width = 80mm (W)
Height = 205mm (H)
Length = 352mm (L)
Weight = 1.25kg
Fixing Centre = 250mm



EXIT/EMERGENCY LIGHTING

Applications

Suitable for architectural exit applications. The contemporary design is also environmentally friendly with long LED life and the latest battery technology. It reduces carbon emissions and eliminates heavy metal contamination from the batteries.

Features - EXITREC

- Slim edgelite design flush with mounting
- Supplied with flex and plug fitted
- 2.3W LED tube provides longer lamp life and lower power consumption
- Electronic continuous current charging system 3.6V 60mA
- Contains NiMH batteries; these are a greener alternative to NiCd batteries which contain the heavy toxic metal 'cadmium'
- Complies with AS/NZS2293.

Operational Information

General

Operational Voltage	220-240V
Operational Frequency	50/60Hz
Power Consumption	2.3W
Viewing Distance	24m
Wiring	2 pin flex and plug

Battery

Type	High temperature nickel metal hydride
Capacity	1200mAh
Voltage	3.6V
Discharge Rating	2 hours

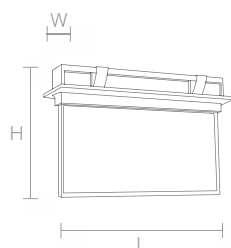
WAFER (LED)

Cat No.	Description
EXITREC	Recessed exit
EXITRECSM	Surface mount exit
EXITRECDALI	DALI control version



Standard Dimensions

Width = 95mm (W)
Height = 240mm (H)
Length = 348mm (L)
Weight = 0.78kg
Cut-out = 318mm x 75mm
Recess Depth = 60mm



Applications

With a D40 spacing classification, this emergency fitting is the ideal choice in all commercial projects.

Features - EMG

- Non-maintained model
- Two size reflector dishes in one box (85mm and 140mm)
- Dual rate constant current and charger and high temperature nickel metal hydride batteries
- Complete with flex and plug supplied and fitted
- High output lamp included with vandal resistant dome
- Complies with AS/NZS2293
- LED emergency light
- Recessed unit
- Vandal resistance cover
- Highly efficient switch mode power supply for minimum energy use
- D40 Australian Emergency Classification.

Operational Information

General

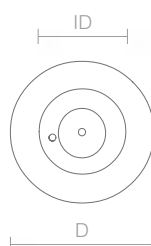
Operational Voltage	220-240V
Operational Frequency	50/60Hz
Power Consumption	1.8W
Max. Ambient Temperature	40°C
Wiring	2 pin flex and plug
Mounting Type	Recessed mounting

Battery

Type	High temperature nickel metal hydride
Capacity	2100mAh
Voltage	4.8V
Discharge Rating	2 hours

SENTINEL

Cat No.	Description
EMG	Emergency single point LED
EMGSM	Surface mount single point LED
EMGDALI	DALi control version



Standard Dimensions

Outside Diameter = 140mm (D)

Inside Diameter = 85mm (ID)



EXTENSIVE RANGE OF DOWNLIGHTS

Downlights are now the most popular way to shed light for many applications. An integral part of any well designed interior, downlights not only illuminate a room, but can also be used to create dramatic lighting effects.

Clipsal's extensive downlight range comes in many varieties to allow the user to satisfy their style, economy or responsibility needs. Downlights are available in standard dichroic lamps with the latest IRC technology and energy saving LEDs or CFLs, providing the options needed to suit any job.



LED DOWNLIGHT KITS

Applications

LED downlights are perfect for any commercial or residential application. With their low running temperature and low energy consumption, these downlights will soon be the preferred choice.

Features

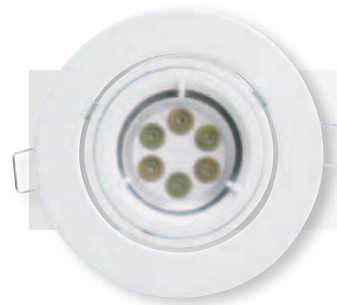
- 700mA constant current driver included
- Low voltage 17-20V
- 12W - 50,000hr lamp
- >650 lumens for 3000k (warm white)
- >700 lumens for 4500k (cool white)



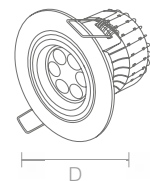
Clipsal LED downlights can save up to 15% on energy consumption when compared to CFL equivalent products.

LED DOWNLIGHT KIT - 12W, 35 DEGREE ROUND GIMBLE

Cat No.	Description
L935C/12WH	Cool white lamp, White
L935C/12BC	Cool white lamp, Brushed Chrome
L935W/12WH	Warm white lamp, White
L935W/12BC	Warm white lamp, Brushed Chrome



Standard Dimensions
Cut-out Diameter = 92mm
Overall Diameter = 100mm (D)
Recess Depth = 76.5mm
Lamp Type = 12W LED

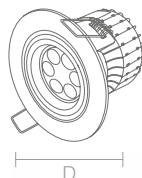


LED DOWNLIGHT KIT - 12W, 60 DEGREE ROUND GIMBLE

Cat No.	Description
L960C/12WH	Cool white lamp, White
L960C/12BC	Cool white lamp, Brushed Chrome
L960W/12WH	Warm white lamp, White
L960W/12BC	Warm white lamp, Brushed Chrome



Standard Dimensions
Cut-out Diameter = 92mm
Overall Diameter = 100mm (D)
Recess Depth = 76.5mm
Lamp Type = 12W LED



LED DOWNLIGHT - 70 DEGREE ROUND FIXED*

Cat No.	Description
L970H4C/11WH	11W, cool white lamp, White
L970H4W/11WH	11W, warm white lamp, White
L970H5C/14WH	14W, cool white lamp, White
L970H5W/14WH	14W, warm white lamp, White
L970H6C/21WH	21W, cool white lamp, White
L970H6W/21WH	21W, warm white lamp, White

*To be released



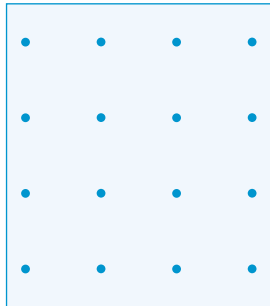
Standard Dimensions - 11W
Cut-out Diameter = 107mm
Overall Diameter = 119mm
Recess Depth = 107mm

Standard Dimensions - 14W
Cut-out Diameter = 120mm
Overall Diameter = 143mm
Recess Depth = 95mm

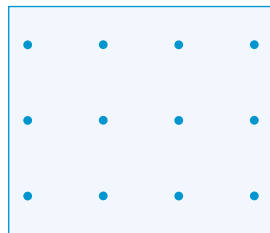
Standard Dimensions - 21W
Cut-out Diameter = 156mm
Overall Diameter = 168mm
Recess Depth = 95mm

HOW DOES THE CLIPSAL LED AND 13W COMPACT FLUORESCENT LAMP (CFL) COMPARE AGAINST A 50W HALOGEN DICHROIC?

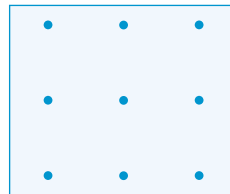
Below is an example of the proper spacing requirements of light fittings to ensure satisfactory luminescence. Diagrams illustrate the number of downlights per square metre of floor area.



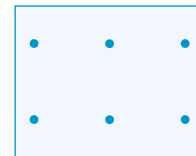
Room A



Room B



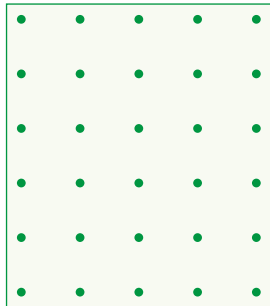
Room C



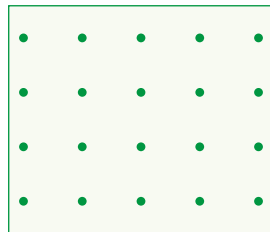
Room D



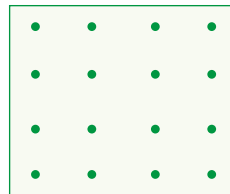
Room E



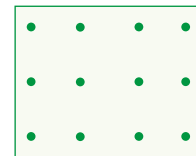
Room A



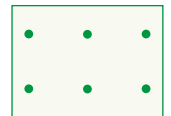
Room B



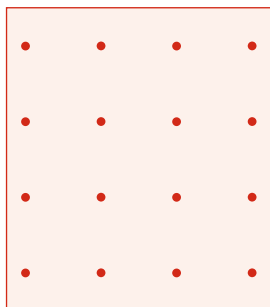
Room C



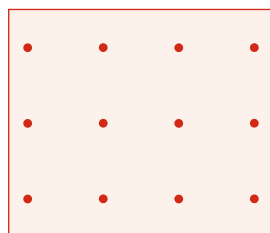
Room D



Room E



Room A



Room B



Room C



Room D



Room E

Summary 12W LED (700 lumens 60 degrees)			
Room	Label	Area M ²	Total Watts
Room A	7 x 8 x 2.4m (12W LED)	56	284
Room B	6 x 7 x 2.4m (12W LED)	42	227.2
Room C	5 x 6 x 2.4m (12W LED)	30	170.4
Room D	4 x 5 x 2.4m (12W LED)	20	127.8
Room E	3 x 4 x 2.4m (12W LED)	12	85.2

Summary 50W halogen dichroic (742 lumens 60 degrees)			
Room	Label	Area M ²	Total Watts
Room A	7 x 8 x 2.4m (50W GU10)	56	928
Room B	6 x 7 x 2.4m (50W GU10)	42	696
Room C	5 x 6 x 2.4m (50W GU10)	30	522
Room D	4 x 5 x 2.4m (50W GU10)	20	348
Room E	3 x 4 x 2.4m (50W GU10)	12	232

Summary 13W CFL (433 lumens 60 degrees)			
Room	Label	Area M ²	Total Watts
Room A	7 x 8 x 2.4m (13W GU10)	56	390
Room B	6 x 7 x 2.4m (13W GU10)	42	260
Room C	5 x 6 x 2.4m (13W GU10)	30	208
Room D	4 x 5 x 2.4m (13W GU10)	20	156
Room E	3 x 4 x 2.4m (13W GU10)	12	78

COMPACT FLUORESCENT DOWNLIGHTS

Applications

To suit residential, commercial and retail applications by combining extreme lamp efficiency with long operating lamp hours. Ideal where lamps will be in operation for long periods of time whilst minimising running costs and CO₂ emissions.

Features

- Very high lumen output CFL lamps
- 40 lumens per watt efficiency
- Special 240V SGU10 lamp holder for electrical safety when relamping
- Life of 10,000hrs (10 times life of standard incandescent lamp)
- Easy fitting with enclosed terminal connector
- Available in 11W and 13W kits (440 lumens and 520 lumens output)
- IP65 is suitable for bathroom and wet area applications.



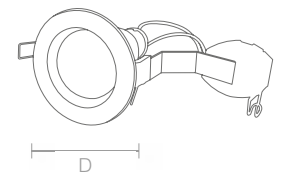
Clipsal CFL downlights use 70-80% less power than traditional incandescent lamps.

COMPACT FLUORESCENT DOWNLIGHTS ROUND FIXED - DIMMABLE

Cat No.	Description
741/11DFPWH	11W, White
741/11DFPSS	11W, Satin Silver
741/11DFPCH	11W, Chrome
741W/11DFPWH	11W, White
741W/11DFPSS	11W, Satin Silver
741W/11DFPCH	11W, Chrome



Standard Dimensions
Cut-out Diameter = 85mm
Overall Diameter = 95mm (D)
Recess Depth = 115mm
Lamp Type = SGU10

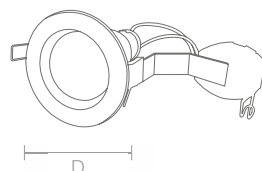


COMPACT FLUORESCENT DOWNLIGHTS ROUND FIXED

Cat No.	Description
741/13WH	13W, White
741/13SS	13W, Satin Silver
741/13CH	13W, Chrome
741W/13WH	13W, White
741W/13SS	13W, Satin Silver
741W/13CH	13W, Chrome



Standard Dimensions
Cut-out Diameter = 85mm
Overall Diameter = 95mm (D)
Recess Depth = 115mm
Lamp Type = SGU10

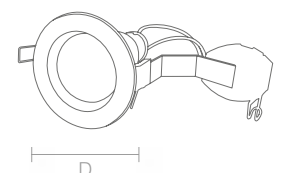


COMPACT FLUORESCENT DOWNLIGHTS ROUND GIMBLE

Cat No.	Description
742/13WH	13W, White
742/13SS	13W, Satin Silver
742/13CH	13W, Chrome
742W/13WH	13W, White
742W/13SS	13W, Satin Silver
742W/13CH	13W, Chrome



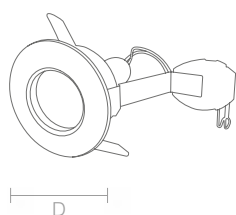
Standard Dimensions
Cut-out Diameter = 95mm
Overall Diameter = 105mm (D)
Recess Depth = 115mm
Lamp Type = SGU10



COMPACT FLUORESCENT DOWNLIGHTS

COMPACT FLUORESCENT DOWNLIGHTS ROUND GIMBLE - DIMMABLE

Cat No.	Description
742/11DFPWH	11W, White
742/11DFPSS	11W, Satin Silver
742/11DFPCH	11W, Chrome
742W/11DFPWH	11W, White
742W/11DFPSS	11W, Satin Silver
742W/11DFPCH	11W, Chrome

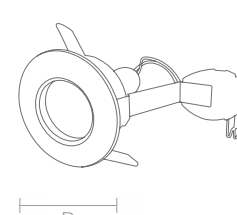


Standard Dimensions

Cut-out Diameter = 95mm
Overall Diameter = 105mm (D)
Recess Depth = 115mm
Lamp Type = SGU10

COMPACT FLUORESCENT DOWNLIGHTS IP65 RATING

Cat No.	Description
743/13WH	13W, White
743/13SS	13W, Satin Silver
743/13CH	13W, Chrome
743W/13WH	13W, White
743W/13SS	13W, Satin Silver
743W/13CH	13W, Chrome



Standard Dimensions

Cut-out Diameter = 85mm
Overall Diameter = 100mm (D)
Recess Depth = 130mm
Lamp Type = SGU10



ENCLOSED DOWNLIGHTS

Applications

A range of covered downlights complete with intumescent material for added protection. In the event of overheating the material will seal the downlight.

Features

- Integrated intumescent material that seals the downlight and cuts out in the event of overheating
- Supplied with 200mm cable for direct connection to a remote transformer (not included)
- Complete with MR16 35W lamp
- Available in low voltage or mains rated versions
- Fixed or gimble options available
- Can only be mounted with a 25mm clearance.

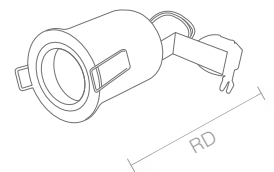
MAINS VOLTAGE FIXED

Cat No.	Description
981WH	35W, White
981SS	35W, Satin Silver
981CH	35W, Chrome



Standard Dimensions

Cut-out Diameter = 75mm
Overall Diameter = 85mm
Recess Depth = 139mm (RD)



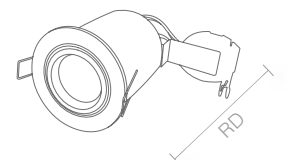
MAINS VOLTAGE GIMBLE

Cat No.	Description
982WH	35W, White
982SS	35W, Satin Silver
982CH	35W, Chrome



Standard Dimensions

Cut-out Diameter = 85mm
Overall Diameter = 95mm
Recess Depth = 144mm (RD)
Horizontal Adjustment = 30°



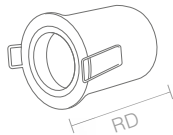
ENCLOSED LOW VOLTAGE DOWNLIGHTS

ENCLOSED LOW VOLTAGE ROUND FIXED

Cat No.	Description
991WH	35W, White
991SS	35W, Satin Silver
991CH	35W, Chrome



Standard Dimensions
Cut-out Diameter = 75mm
Overall Diameter = 85mm
Recess Depth = 139mm (RD)



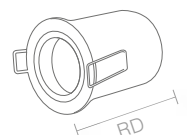
*Transformer not included.

ENCLOSED LOW VOLTAGE ROUND GIMBLE

Cat No.	Description
992WH	35W, White
992SS	35W, Satin Silver
992CH	35W, Chrome



Standard Dimensions
Cut-out Diameter = 85mm
Overall Diameter = 95mm
Recess Depth = 144mm (RD)
Horizontal Adjustment = 30°



*Transformer not included.



ENCLOSED LOW VOLTAGE DOWNLIGHTS

Applications

A range of enclosed downlights that are supplied in a kit form, which includes a transformer with flex and plug.

Features

- Integrated intumescent material that seals the downlight and cuts out in the event of overheating
- 12V transformer included - not C-Bus compatible
- Complete with MR16 35W lamp
- Fixed or gimble options
- Can only be mounted with a 25mm clearance.

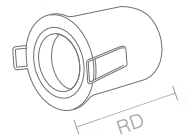
ENCLOSED LOW VOLTAGE ROUND GIMBLE - WITH TRANSFORMER

Cat No.	Description
992BWH	35W, White
992BSS	35W, Satin Silver
992BCH	35W, Chrome



Standard Dimensions

Cut-out Diameter = 85mm
Overall Diameter = 95mm
Recess Depth = 144mm (RD)
Horizontal Adjustment = 30°



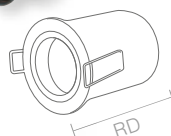
ENCLOSED LOW VOLTAGE ROUND FIXED - WITH TRANSFORMER

Cat No.	Description
991BWH	35W, White
991BSS	35W, Satin Silver
991BCH	35W, Chrome



Standard Dimensions

Cut-out Diameter = 75mm
Overall Diameter = 85mm
Recess Depth = 139mm (RD)



IRC DOWNLIGHTS

Applications

IRC downlights provide the same lumen output as a 50W dichroic lamp however only use 35W of power. This is a 30% energy saving whilst providing the same lamp life (5000 hours) as a dichroic lamp. Perfect for those wanting a greener solution.

Features

- Energy saving 35W IRC lamp
- Produces equivalent lumen output of a 50W standard halogen
- 5,000hr lamp life
- Die-cast construction
- Low voltage transformer that is compatible with Clipsal control products, including C-Bus® and Clipsal C-Thru® dimmers.



Clipsal IRC downlights' special infrared coating converts some of the heat loss into more light, providing the same light output as 50W dichroic lamps.

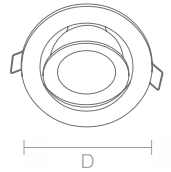
IRC LAMP ENERGY SAVING KITS ROUND GIMBLE

Cat No.	Description
DLKLRG/FP,WE	With flex and plug, White
DLKLRG/FP,CH	With flex and plug, Chrome
DLKLRG/FP,BC	With flex and plug, Brushed Chrome



Standard Dimensions

Cut-out Diameter = 92mm
Overall Diameter = 105mm (D)
Recess Depth = 70mm



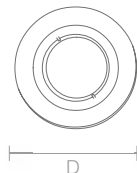
IRC LAMP ENERGY SAVING KITS ROUND FIXED

Cat No.	Description
DLKLRF/FP,WE	With flex and plug, White
DLKLRF/FP,CH	With flex and plug, Chrome
DLKLRF/FP,BC	With flex and plug, Brushed Chrome



Standard Dimensions

Cut-out Diameter = 70mm
Overall Diameter = 80mm (D)
Recess Depth = 50mm



LOW VOLTAGE DOWNLIGHTS

Applications

The CDL Series downlight range is both durable and stylish, available in a variety of modern finishes to suit every décor. The soft tones of these downlights are an effective way of creating the perfect lighting mood. The cool daylight hues are an ideal way to highlight artwork or photographs, or even to create a 'wall' of light.

Features

- Twisted bayonet fitting for ease of re-lamping
- Multi-point contact lamp holder for good heat dissipation and longer lamp life
- Downlights come with a 230-240V/12V dimmable electronic transformer
- 250mm lamp lead sets for easy installation
- Large terminals for easy wiring (2 x 2.5mm)
- Includes an optional Earth loop terminal for easy fit-off
- Compatible with Clipsal control products, including C-Bus® and Clipsal C-thru® dimmers.

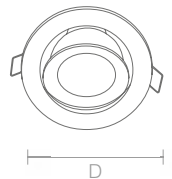
LOW VOLTAGE ROUND GIMBLE

Cat No.	Description
CDL1ER/FP,WE	With flex and plug, White
CDL1ER/FP,CH	With flex and plug, Chrome
CDL1ER/FP,BC	With flex and plug, Brushed Chrome
CDL1ER,WE	White
CDL1ER,CH	Chrome
CDL1ER,BC	Brushed Chrome



Standard Dimensions

Cut-out Diameter = 92mm
Overall Diameter = 105mm (D)
Recess Depth = 70mm
Lamp Type = MR16



LOW VOLTAGE ROUND FIXED

Cat No.	Description
CDL1ERF/FP,WE	With flex and plug, White
CDL1ERF/FP,CH	With flex and plug, Chrome
CDL1ERF/FP,BC	With flex and plug, Brushed Chrome
CDL1ERF,WE	White
CDL1ERF,CH	Chrome
CDL1ERF,BC	Brushed Chrome



Standard Dimensions

Cut-out Diameter = 70mm
Overall Diameter = 80mm (D)
Recess Depth = 50mm
Lamp Type = MR16



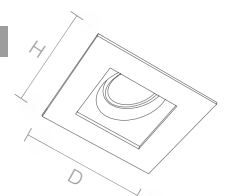
LOW VOLTAGE SQUARE FIXED

Cat No.	Description
CDL1ESQ/FP,WE	With flex and plug, White
CDL1ESQ/FP,3A	With flex and plug, Satin Silver
CDL1ESQ,WE	White
CDL1ESQ,3A	Satin Silver



Standard Dimensions

Cut-out Diameter = 88mm
Overall Dimensions = 100mm (D) x 100 (H)
Recess Depth = 80mm
Lamp Type = MR16



SATURN DOWNLIGHTS

Applications

Clipsal Saturn is a premium range of architecturally designed electrical accessories. Especially appealing to those who desire the latest styles and fashions. Lighting is one aspect around the home you want to get just right and the Clipsal Saturn downlight range will help you achieve this. Attention to detail makes this range the most stunning and fashionable downlight on the market. The unique finish and design of Clipsal Saturn downlights will shed light with style, enhancing the natural beauty of a home.

Features

- Round glass fascia with White, Chrome or Brushed Chrome housing
- Smaller than standard downlights
- Low voltage transformer and lamp included
- Available with flex and plug options
- Easy installation
- Compatible with Clipsal control products, including C-Bus® and Clipsal C-Thru® dimmers.

LOW VOLTAGE SATURN

Cat No.	Description
CDLSFGR/FP,WE	With flex and plug, White
CDLSFGR/FP,CH	With flex and plug, Chrome
CDLSFGR/FP,BC	With flex and plug, Brushed Chrome
CDLSFGR,WE	White
CDLSFGR,CH	Chrome
CDLSFGR,BC	Brushed Chrome



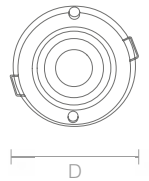
Standard Dimensions

Cut-out Diameter = 70mm

Overall Diameter = 80mm (D)

Recess Depth = 50mm

Lamp Type = MR16



BATHROOM DOWNLIGHTS

Applications

Clipsal offers a range of downlights that are suitable for bathroom and other wet area installations. IP54 rated, these fittings are available with either a round opal domed lens or a round flush mounted clear lens.

Features

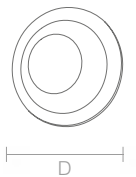
- Low voltage transformer that is compatible with Clipsal control products, including C-Bus® and Clipsal C-Thru® dimmers
- 250mm silicon lamp lead
- Supplied with flex and plug as standard
- 35W EXN lamp
- IP54 rated.

BATHROOM DOWNLIGHT KITS OPAL DOMED LENS

Cat No.	Description
CDL1ER54/FP,WE	With flex and plug, White
CDL1ER54/FP,CH	With flex and plug, Chrome
CDL1ER54/FP,BC	With flex and plug, Brushed Chrome



Standard Dimensions
Cut-out Diameter = 70mm
Overall Diameter = 95mm (D)
Recess Depth = 75mm
Lamp Type = MR16 35W

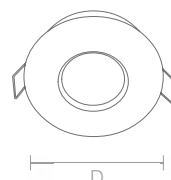


BATHROOM DOWNLIGHT KITS FLUSH MOUNTED CLEAR GLASS LENS

Cat No.	Description
CDL1ERF54/FP,WE	With flex and plug, White
CDL1ERF54/FP,CH	With flex and plug, Chrome
CDL1ERF54/FP,BC	With flex and plug, Brushed Chrome



Standard Dimensions
Cut-out Diameter = 70mm
Overall Diameter = 88mm (D)
Recess Depth = 75mm
Lamp Type = MR16 35W



SQUARE LOW VOLTAGE DOWNLIGHT FIXTURES

Applications

A range of fixed and gimble downlight fixtures only. These fixtures are suitable for residential or commercial applications requiring a stylish, modern look.

Features

- Ceiling clips
- Gimble or fixed.

LOW VOLTAGE SQUARE GIMBLE - FITTING ONLY

Cat No.	Description
LVGSQWE	White
LVGSQCH	Chrome
LVGSQBC	Brushed Chrome

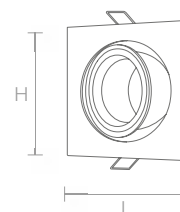


Standard Dimensions

Cut-out Diameter = 85mm

Overall Dimensions = 95mm (H) x 95mm (L)

Recess Depth = 70mm



LOW VOLTAGE SQUARE FIXED - FITTING ONLY

Cat No.	Description
LVFSQWE	White
LVFSQCH	Chrome
LVFSQBC	Brushed Chrome

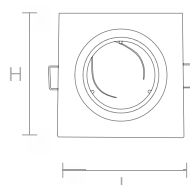


Standard Dimensions

Cut-out Diameter = 70mm

Overall Dimensions = 80mm (H) x 80mm (L)

Recess Depth = 60mm



PL DOWNLIGHTS

Applications

PL downlights are easy to fit and very cost effective. Supplied with integral high frequency control gear, unique features include retrofit IP rated lens, drop glass and turbo louvres. Suit all commercial projects such as board rooms, hospitals and aged care applications.

Features

- Compact fluorescent downlight with faceted aluminium high finish reflector
- Horizontally mounted lamps for high efficiency and reduced running costs
- Easy installation three point fixing system
- Polycarbonate ventilated housing
- Shallow recessing of only 150mm
- Tiltable lamp holders for easy lamp replacement
- Single and twin versions
- High frequency non-dimming integral electronic control gear
- Flex and plug supplied and fitted
- White trim
- Dimming options on request
- Suitable for maximum thickness ceiling of 20mm
- Lamps PL-C four pin (lamps not included)
- Optional twist and lock-on accessories:
- Glass cover IP65 rated
- Drop glass lens.



Clipsal PL downlights have fluorescent lamps combined with high frequency electronic ballasts, which makes them extremely energy efficient.

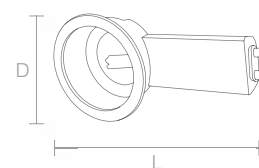
PL FLUORESCENT SINGLE LAMP

Cat No.	Description
181WH	1 x 18W
261WH	1 x 26W



Standard Dimensions

Cut-out Diameter = 233mm
Overall Diameter = 255mm (D)
Recess Depth = 125mm
Height = 140mm
Length = 505mm (L)



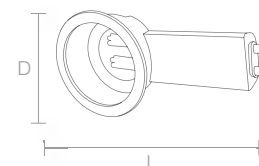
PL FLUORESCENT DUAL LAMP

Cat No.	Description
182WH	2 x 18W
262WH	2 x 26W



Standard Dimensions

Cut-out Diameter = 233mm
Overall Diameter = 255mm (D)
Recess Depth = 125mm
Height = 140mm
Length = 505mm (L)



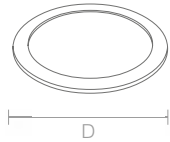
PL DOWNLIGHT ACCESSORIES

BEZEL TRIM WITH CLEAR GLASS SUITS PL FLUORESCENT DOWNLIGHT

Cat No.	Description
811WH	Pressed steel IP65 twist-off bezel trim with clear glass



Standard Dimensions
Overall Diameter = 255mm (D)
Projection = 9mm

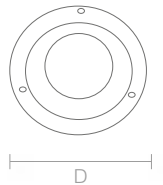


TRIM WITH CLEAR/FROSTED FLOATING GLASS SUITS PL FLUORESCENT DOWNLIGHT

Cat No.	Description
820WH	Pressed steel twist-off bezel trim with clear/frosted floating glass



Standard Dimensions
Overall Diameter = 255mm (D)
Projection = 40mm



Centra Plaza. Department of Industry, Tourism and Resources, Canberra.



CABINET LIGHTING

Applications

Cabinet downlights are suitable for all surface or recessing requirements. Applied in kitchen bench tops, cabinet shelves, display cabinets, bookcases or bar areas to provide great illumination where space is at a premium, whilst also saving on running costs.

Features

- Energy efficient 7W GX53 T2 fluorescent lamp included (4000K)
- Long lamp life of 8,000hr
- Will accept up to 13W T2 lamps
- Surface and recessing options
- Not suitable for dimming
- Complete with lamp holder and 2m mains lead for hard wiring.



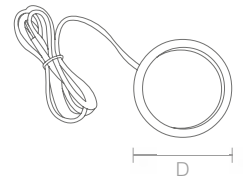
Clipsal CFL cabinet lights use 70-80% less power than incandescent lamps.

CABINET LIGHTING

Cat No.	Description
204WH	240V, 7W, White
204CH	240V, 7W, Chrome



Standard Dimensions
Overall Diameter = 95mm (D)
Recess Depth = 26mm
Surface Mount Projection = 37mm
Lamp Type = GX53
Cut-out Diameter = 80mm

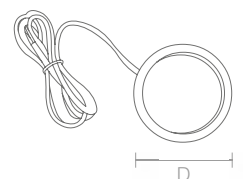


CABINET LIGHTING

Cat No.	Description
201WH	240V, 7W, polycarbonate, White



Standard Dimensions
Overall Diameter = 84mm (D)
Projection = 25mm
Lamp Type = GX53
Surface Mount Depth = 37mm



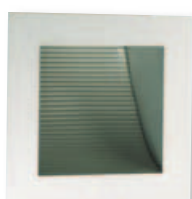


LED LIGHTING

Clipsal's LED Lighting utilises the latest electronic lighting diode technology. They are available in white and blue illumination and have an extremely long lamp life exceeding 50,000 hours. This range has the ability to produce the "pure colours" that are not possible to achieve with other light sources, which allows them to operate at very low power consumption. LED lighting also has no filaments so they seldom require replacing and are very compact in size, while offering high resistance to vibration or shock.



More efficient than CFL lamps, LED technology saves up to a further 15% on energy consumption.



Hilton Adelaide, Conference Centre.

LED DOWNLIGHT KITS

Applications

The LED downlight is perfect for any commercial or residential application. With its low running temperature and low energy consumption, the LED downlight will soon be the preferred choice.

Features

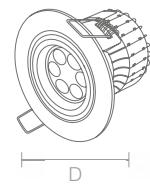
- 700mA constant current driver included
- Low voltage 17-20V
- 12W - 50,000hr lamp
- >650 lumens for 3000k (warm white)
- >700 lumens for 4500k (cool white).

LED DOWNLIGHT KIT - 12W, 35 DEGREE ROUND GIMBLE

Cat No.	Description
L935C/12WH	Cool white lamp, White
L935C/12BC	Cool white lamp, Brushed Chrome
L935W/12WH	Warm white lamp, White
L935W/12BC	Warm white lamp, Brushed Chrome



Standard Dimensions
Cut-out Diameter = 92mm
Overall Diameter = 100mm (D)
Recess Depth = 76.5mm
Lamp Type = 12W LED

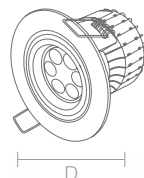


LED DOWNLIGHT KIT - 12W, 60 DEGREE ROUND GIMBLE

Cat No.	Description
L960C/12WH	Cool white lamp, White
L960C/12BC	Cool white lamp, Brushed Chrome
L960W/12WH	Warm white lamp, White
L960W/12BC	Warm white lamp, Brushed Chrome



Standard Dimensions
Cut-out Diameter = 92mm
Overall Diameter = 100mm (D)
Recess Depth = 76.5mm
Lamp Type = 12W LED



LED DOWNLIGHT - 70 DEGREE ROUND FIXED*

Cat No.	Description
L970H4C/11WH	11W, cool white lamp, White
L970H4W/11WH	11W, warm white lamp, White
L970H5C/14WH	14W, cool white lamp, White
L970H5W/14WH	14W, warm white lamp, White
L970H6C/21WH	21W, cool white lamp, White
L970H6W/21WH	21W, warm white lamp, White

*To be released



Standard Dimensions - 11W
Cut-out Diameter = 107mm
Overall Diameter = 119mm
Recess Depth = 107mm

Standard Dimensions - 14W
Cut-out Diameter = 120mm
Overall Diameter = 143mm
Recess Depth = 95mm

Standard Dimensions - 21W
Cut-out Diameter = 156mm
Overall Diameter = 168mm
Recess Depth = 95mm

STAIR/WALL LOW LEVEL LIGHTING

Applications

Suitable for residential or commercial applications where low level lighting is required. These low wattage fixtures also mean low running costs.

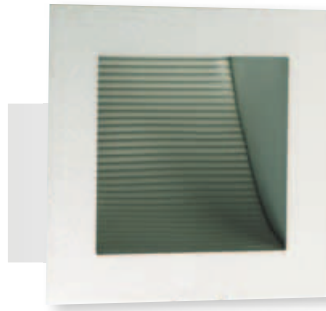
Perfect for applications where lights need to be left running for long periods of time.

Features

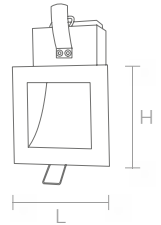
- Low level lighting features
- Mains voltage with integral LED 240V driver
- Non-dimming
- Low running cost
- Long lamp life
- Blue or white LEDs available
- Interior use only.

SQUARE UP/DOWN PRESSED STEEL

Cat No.	Description
L780WH	8 x White LED (1.6W total)



Standard Dimensions
Cut-out: 75mm x 70mm
Overall Dimensions: 90mm (H) x 90mm (L)
Recess Depth: 75mm

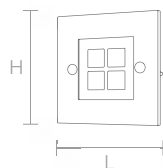


SQUARE CAST ALUMINIUM

Cat No.	Description
L681WH	4 x White LED (1W total)



Standard Dimensions
Cut-out Diameter: 60mm x 60mm
Overall Dimensions: 91mm (H) x 91mm (L)
Recess Depth: 45mm

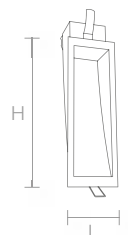


RECTANGULAR UP/DOWN PRESSED STEEL

Cat No.	Description
L781WH	8 x White LED (1.6W total)



Standard Dimensions
Cut-out Diameter: 220mm x 70mm
Overall Dimensions: 235mm (H) x 80mm (L)
Recess Depth: 85mm



IP65 RATED LIGHTING

Applications

With their IP65 rating, these fixtures can be used not only for indoor lighting requirements but for exterior lighting as well. Their low level light is ideal for illuminating stairways and corridors. With a cool operating temperature, pure light emitting colours and long lamp life, these lights will continue to feature for many years to come.

Features

- IP65 rated
- Integrated LED driver
- Satin Silver cast aluminium face plate
- LED life up to 30,000hr
- Non-dimmable.

SQUARE ALUMINIUM EXTERIOR OR INTERIOR

Cat No.	Description
L881WH	14 x White LED (3W total)
L881BLU	14 x Blue LED (3W total)

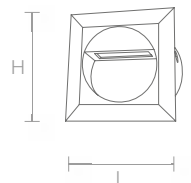


Standard Dimensions

Cut-out Diameter: 120mm

Overall Dimensions: 126mm (H) x 126mm (L)

Recess Depth: 70mm



ROUND ALUMINIUM EXTERIOR OR INTERIOR

Cat No.	Description
L880WH	14 x White LED (3W total)
L880BLU	14 x Blue LED (3W total)

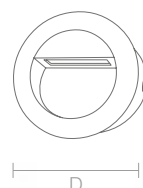


Standard Dimensions

Cut-out Diameter: 120mm

Overall Diameter: 126mm (D)

Recess Depth: 70mm



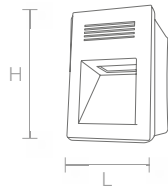
IP65 RATED LIGHTING

RECTANGULAR ALUMINIUM EXTERIOR OR INTERIOR

Cat No.	Description
L882WH	10 x White LED (1W total)
L882BLU	10 x Blue LED (1W total)



Standard Dimensions
Cut-out: 117mm x 77mm
Overall Dimensions: 145mm (H) x 95mm (L)
Recess Depth: 100mm

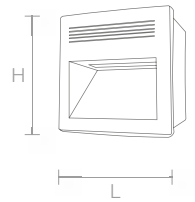


SQUARE ALUMINIUM EXTERIOR OR INTERIOR

Cat No.	Description
L883WH	18 x White LED (4W total)
L883BLU	18 x Blue LED (4W total)



Standard Dimensions
Cut-out: 122mm x 125mm
Overall Dimensions: 135mm (H) x 135mm (L)
Recess Depth: 100mm



CABINET LIGHTING

Applications

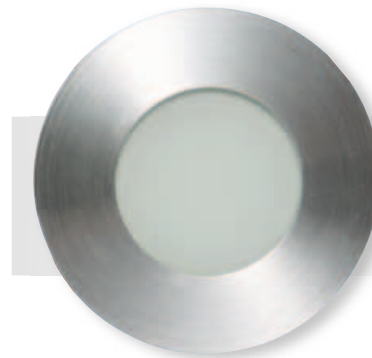
Great for use under benches, cabinets, bookcases or shelving in any residential or commercial applications where low level lighting is required. Low wattage means low running costs, so these fittings may be left running for long periods of time.

Features

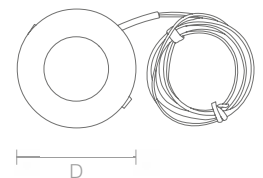
- Low level lighting features
- May be surface or recess mounted
- Remote LED driver required (constant current)
- Supplied with 2m cable for connection to driver
- Non-dimming
- Low running cost
- Long lamp life
- Blue or white LEDs available (only L507)
- Interior use only.

I2V D.C. ALUMINIUM FIXED

Cat No.	Description
L507WH	9 x White LED
L507BLU	9 x Blue LED



Standard Dimensions
Cut-out Diameter: 60mm
Overall Diameter: 74mm (D)
Recess Depth: 25mm
Projection: 8mm

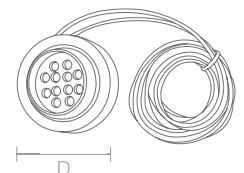


I2V D.C. ADJUSTABLE WHITE LED

Cat No.	Description
L506WH	White polycarbonate (1.1W total)
L506CH	Chrome polycarbonate (1.1W total)



Standard Dimensions
Cut-out Diameter: 55mm
Overall Diameter: 66mm (D)
Recess Depth: 18mm
Horizontal Adjust: 10°
Rotation: 360°



STRIP KITS 12V

Applications

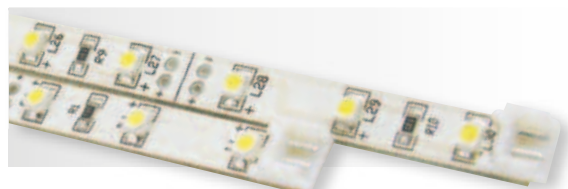
LED strip kits are ideal for quick and simple installation into difficult areas, such as behind splash backs, signs, home theatre risers, bookshelves, bars and display cases. They provide long life lighting with no maintenance needed. They're also safe lighting with no heat emitted from the LEDs.

Features

- Single colour semi-flexible LED strip
- Fast installation into any application
- Kit includes:
 - 4 x 500mm linkable single colour LED strip
 - Fixing brackets
 - Interconnect leads
 - 16W constant voltage LED driver.
- Hard wired
- Cut joint on strips every 47mm for required shortening
- 12mm spacing between LEDs
- LED beam angle 120°
- Voltage drop 0.08V per 2m
- Very low power consumption of only 4.8W per metre
- Non-dimmable.

LED STRIP KIT

Cat No.	Description
LSTH050WH	120 x White LED (4.8W/m)
LSTH050BLU	120 x Blue LED (4.8W/m)



Standard Dimensions

Length: 500mm
Width: 8mm
Height: 4mm
Beam Angle: 120°



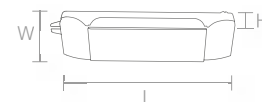
LED DRIVERS

Cat No.	Description
LED1012CV	240V 12V d.c. 10W constant voltage. For use with L506/L507 and L651 Series.
LED16T	240V 12V d.c. 16W constant voltage. For use with L506/L507 Series.



Standard Dimensions

Length: 155mm (L)
Width: 38mm (W)
Height: 24mm (H)



MARKER LIGHTS 12V

Applications

For exterior or interior use such as corridors, stairs, kitchen plinth or home theatre applications.

Easy to install with low maintenance. No heat output and low power consumption.

Features

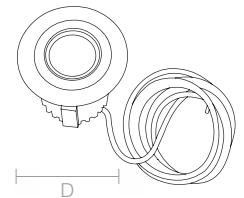
- 12V d.c. IP65 LED marker lights with white LED
- Supplied with 1m cable for connection to constant voltage LED drivers
- Not suitable for mounting in solid walls
- Non-dimmable
- Polycarbonate mouldings
- 0.4W power consumption.

LED MARKER

Cat No.	Description
L651WH	White polycarbonate (0.4W total)
L651CH	Chrome polycarbonate (0.4W total)



Standard Dimensions
Cut-out Diameter: 35mm
Overall Diameter: 49mm (D)
Recess Depth: 50mm





EXTERIOR LIGHTING

Clipsal offers exterior lighting that is ideal for any residential or commercial outdoor application, including bulkheads and decorative lighting, so there is sure to be a style to suit all needs and requirements.

BULKHEAD EXTERIOR LIGHTS

Clipsal bulkhead exterior lights come in round, oval and conical styles and are manufactured from aluminium, stainless steel and die-cast. Clipsal bulkhead exterior lights are also compatible with CFL lamps, so you'll save energy and money while enjoying the convenience of a long lamp life of 8,000 hours.

EXTERIOR WALL LIGHTS

Clipsal exterior wall lights are available with energy saving halogen or CFL lamp options. IP44 or IP54 rated and manufactured from 304 stainless steel means they will withstand exposure to harsh Australian weather all year round.



BULKHEAD EXTERIOR LIGHTING

Applications

Clipsal Bulkhead exterior lights are an ideal way for homeowners to apply the finishing touches when renovating or updating their home. Stylish and durable, these multi-purpose wall lights are ideal for coastal locations or areas where weather affects longevity.

Features

- Die-cast aluminium construction
- Powder coated body
- Frosted glass lens
- E27 ceramic lamp holder
- Lamp not included
- IP44 weatherproof rating.

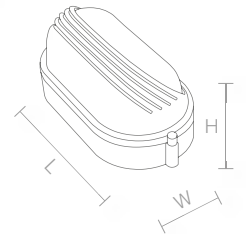
OVAL LOUVRE

Cat No.	Description
COLAB232SW	Aluminium, White
COLAB232SB	Aluminium, Black



Standard Dimensions

Width = 110mm (W)
Height = 90mm (H)
Length = 215mm (L)



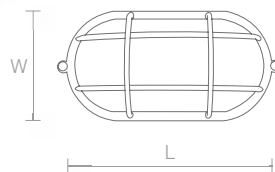
OVAL OPEN CAGE

Cat No.	Description
COOAB236SW	Aluminium, White
COOAB236SB	Aluminium, Black



Standard Dimensions

Width = 110mm (W)
Height = 90mm
Length = 215mm (L)



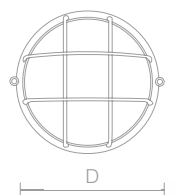
ROUND OPEN CAGE

Cat No.	Description
COCAB301SW	Aluminium, White
COCAB301SB	Aluminium, Black



Standard Dimensions

Diameter = 180mm (D)
Height = 100mm



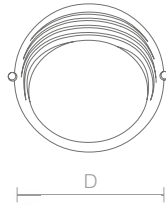
BULKHEAD EXTERIOR LIGHTING

ROUND LOUVRE

Cat No.	Description
COLAB301SW	Aluminium, White
COLAB301SB	Aluminium, Black



Standard Dimensions
Diameter = 180mm (D)
Height = 100mm

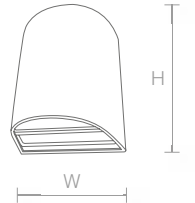


CONICAL

Cat No.	Description
CWL150B	Black wall light



Standard Dimensions
Diameter = 110mm
Height = 190mm (H)
Width = 134mm (W)

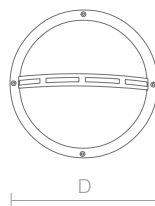


ROUND 304 WITH STRAP

Cat No.	Description
CGB772SS	Stainless steel trim and strap



Standard Dimensions
Diameter = 255mm (D)
Height = 90mm

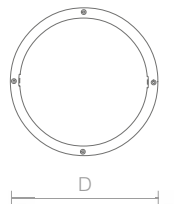


ROUND 304

Cat No.	Description
CGB773S	Stainless steel trim



Standard Dimensions
Diameter = 255mm (D)
Height = 90mm



EXTERIOR WALL LIGHTING

Applications

Suitable for residential and commercial projects, these high quality stainless steel fittings offer style.

Models are available as a single lamp, which may be mounted in an upward or downward position; double lamp versions are also available for simultaneous up and down illumination.

Features - Halogen

- 12V MR11 (1 x 20W and 2 x 20W low voltage) dichroic halogen
- IP65 rating
- 304 stainless steel
- Spring loaded lamp holders to assist re-lamping
- For use with Hunter remote transformer (60VA) (not supplied)
- Dimmable
- Fixed mounting non adjustable
- Lamps not included.

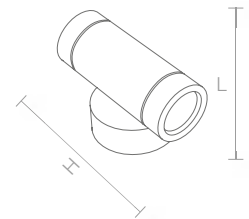
IP65 WALL LIGHT HALOGEN

Cat No.	Description
WDL830	Fixed twin halogen



Standard Dimensions

Overall Diameter = 45mm
Height = 105mm (H)
Length = 63mm (L)
Base = 63mm x 25mm
Lamp Type = MR11



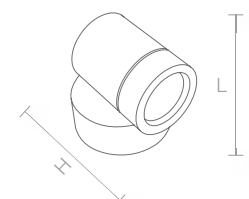
IP65 WALL LIGHT HALOGEN

Cat No.	Description
WDL820	Fixed single halogen



Standard Dimensions

Overall Diameter = 45mm
Height = 60mm (H)
Length = 62mm (L)
Base = 63mm x 25mm
Lamp Type = MR11



EXTERIOR WALL LIGHTING

Applications

This fixture is a contemporary wall light with a modern finish, which will make your outdoor lighting a stunning feature. Perfect for complementing the garden.

Features

- E27 ceramic lamp holder
- Strong construction
- IP44 weatherproof rating
- Lamp not included.

EXTERIOR DECORATIVE WALL LIGHTS UPLIGHT

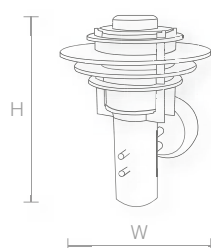
Cat No.	Description
CSSWL555UP	IP44 rated



Standard Dimensions

Height = 290mm (H)

Width = 230mm (W)



INFRASCAN®

PASSIVE INFRARED SENSOR

754 SERIES

CLIPSAL®

by Schneider Electric

See Infrascan in a new light.

Sleek new styling and more features than ever before.

Clipsal's new Outdoor Infrascan range won't leave you in the dark because they now offer a sensor light to suit every application. Enjoy the convenience and security of a sensor light that will deter intruders and welcome guests, while offering innovative features and benefits that are unique to the Clipsal Outdoor Infrascan range. Besides the stylish new look and design, some of the fantastic features include:

- ◎ **Integral Override Facilities:** Override to ON when you don't want the light to time-out accidentally or override to OFF when you don't want the light to activate at all.
- ◎ **Courtesy Light / Dimmer Facility:** Select units feature a courtesy light function. When the unit detects movement, lighting will increase to full brightness, and return to the set dimming level when the timer expires.
- ◎ **Adjustable Beam Focus:** Select units feature an adjustable beam, allowing light to be focused in a narrow beam spot or dispersed to illuminate a larger area using a wide beam spot.



Catalogue No	Description
754HL1/140/150	150W Security Floodlight with 140° PIR Motion Detector, 12m Range
754HS1/140/60	60W Security Spotlight with 140° PIR Motion Detector, 12m Range
754HS2/140/60	60W Security Twinspot with 140° PIR Motion Detector, 12m Range
754HF1/180/150	150W Security Floodlight with 180° PIR Motion Detector, 12m Range
754HF1/180/300	300W Security Floodlight with 180° PIR Motion Detector, 12m Range
754HB1/180/60	60W Security Spotlight with 180° PIR Motion Detector, 12m Range
754HB2/180/60	60W Security Twinspot with 180° PIR Motion Detector, 12m Range
754RFKIT	Wireless Audible Alert Chime for use with 754 Series Infrascan Range

3 WIRE DESIGN



For more information or for a brochure, speak to your **Clipsal Rep**, call **1300 2025 25** or visit **clipsal.com**

DALI CONTROL



ALL UNDER CONTROL WITH DALI

During the late '90s Europe's leading lighting ballast manufacturers recognised the need to adopt a standard interface for digital lighting control systems. The outcome was DALI, an international standard which stands for Digital Addressable Lighting Interface.

Clipsal have developed control hardware and software to fully support the intelligent features of DALI. The DALIcontrol system by Clipsal combines lighting, emergency lighting and controls in one managed solution, to provide cutting edge lighting control for commercial requirements. Built on the DALI protocol, the hardware provides compatibility with many types of electronic control gear, such as electronic ballasts, transformers, LED lights, emergency lights and exit signs, with control from motion sensors, wall switches and touch screens.

The solution is based on intelligent DALIcontrol building controllers that can be installed around a building on existing Ethernet network infrastructure. It uses time schedules, push buttons, switches and sensor inputs to manage all aspects of commercial lighting. The DALIcontrol system also provides a fully compliant (AS/NZS 2293) emergency lighting monitoring and reporting solution.

A key advantage of the DALIcontrol system is that each input, switch and sensor can have four profiles, allowing their behaviour to be tailored for different circumstances. For example, different profiles can be configured for Office Hours, After Hours, Generator Power and Secure Building. During Office Hours a switch may be used as a single-button dimmer, After Hours it may be a Cleaner's button and bring the lights onto 50%; under Generator Power it may only bring the lights on to 20% to reduce load; whilst Secure Building mode may turn all the lights on full.

Inner Northern Busway, Queensland. Photograph by Christopher Fredrick Jones.

DALI CONTROL

EASY DESIGN AND INSTALLATION

The DALIcontrol system combines lighting, emergency lighting and controls on one system. With all lamp types on one system, commercial clients can integrate lighting control with emergency and exit lighting, as well as security and climate systems on one platform. This enables simple and effective master control of the building's services. For more straightforward systems, the simple capability of DALI to provide a single solution with reduced complexity is an attractive prospect.

CONFIGURABLE AND SUSTAINABLE

The clear driving force today in lighting control is to make the best use of the energy consumed by the building under design. The DALIcontrol system has built-in energy efficient behaviour and dynamic profiles to suit the status of the building. Utilising integrated occupancy and light level sensors, each building controller includes an integrated real-time clock with automatic daylight savings correction, sunrise and sunset calculations and holiday exceptions. Occupancy detectors can be used to reduce lighting levels after a pre-defined period. The system can also control fans and blinds.

FLEXIBLE AND EXTENSIBLE

The DALIcontrol system by Clipsal provides, by its very architecture, a uniquely flexible approach to floor plan control. The system gives the designer a wide degree of flexibility in zone definition and control strategy – and ensures that changing tenancies, future expansion, new features, and reconfiguration are all easily catered for, at any time and without alterations to wiring.

Utilising Clipsal's M3 five-pin 'soft-wiring' system, a DALIcontrol system is simple to install and commission, while minimising labour costs. The distributed architecture enables sections to be tested and commissioned ready for the tenancy, as each area is installed. The end result is an eco-friendly, flexible and economical DALI lighting solution to suit everyone's needs.

MAINTAINABLE AND ACCESSIBLE

With the ability to generate full error reporting of all light fittings and carry out emergency light testing, a DALIcontrol system makes it easier to maintain the lighting component of a building. Accessible with Ethernet access, the system is ideal for integration with other building services.

FUTUREPROOF

The ability to control and monitor lighting means that lighting control plays a critical role in determining and achieving energy savings; assisting to comply with world class recognised standards driven by the NSW Department of Environment, Climate Change & Water (NABERS rating system) and the Green Building Council of Australia (Green Star rating system). Built on two International Standards, DALI and Ethernet, DALI is supported by all major ballast manufacturers.

The Clipsal DALIcontrol solution has been used in major commercial buildings for office, architectural, tunnel, restaurant and retail lighting applications in Australia and overseas. If you're planning a commercial project requiring a lighting control solution, then a DALIcontrol lighting system is without a doubt one of the simplest and easiest methods of achieving superior and hassle-free lighting control and energy management.

For more information visit www.clipsal.com/dalicontrol.





LIGHTING ACCESSORIES

Along with Clipsal's extensive range of lighting comes Clipsal lighting accessories. Clipsal offers a huge range of additional lighting accessories to create the perfect lighting solution for all requirements and applications.

Clipsal's range of lighting accessories includes lamps, lamp holders, control gear, fluorescent starters, adaptors, batten holders, ceiling roses with terminals, well glass fittings, diffusers, lenses and mounting brackets.

No matter what your lighting requirements, Clipsal has you covered.



LIGHTING ACCESSORIES

LOW VOLTAGE DOWNLIGHT TRANSFORMERS

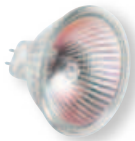


- CDL1E60C/FP**
- 240 12V 60VA.
 - C-Bus compatible Hunter electronic transformer.
 - Includes flex and plug.

- CDL1E60C**
- 240 12V 60VA
 - C-Bus compatible Hunter electronic transformer.

- STR50/12H**
- 240 12V 50VA.
 - Electro-magnetic transformer.
 - Suits installations where downlight is located up to 10m from transformer.
 - Includes and plug.

LAMPS 12V MR16



- MR16/50/EXT** • 50W EXT 14° 3,000hr.
MR16/50/EXN • 50W EXN 38° 3,000hr.
MR16/50/FNV • 50W FNV 60° 3,000hr.
MR16/35/IRC • 35W IRC EXN 38° 5,000hr.

LAMPS 240V CFL SGU10 10,000HR



- 4011/30** • 11W 3,000K warm white (non-dimming).
4011/40 • 11W 4,000K cool white (non-dimming).
4013/30 • 13W 3,000K warm white (non-dimming).
4013/40 • 13W 4,000K cool white (non-dimming).

LAMPS 240V T2 CFL GX53 8,000HR



- UFL780** • 13W 3,000K warm white (non-dimming).
UFL790 • 13W 4,000K cool white (non-dimming).

SURFACE SOCKETS



- 413** • 250V, 10A 3-pin with looping terminal.
 • Diameter: 66mm, Height: 46mm.
- 413,TR** • 250V, 10A 3-pin with looping terminal, transparent.
 • Diameter: 66mm, Height: 46mm.
- 413,QC** • 250V, 10A 3-pin.
 • Uses the patented Krone ISA-PLUS insulation displacement termination method.

FLUORESCENT STARTERS



- 700FE-U** • 220-250V, 4-80W universal starter switch.
 • Diameter: 21mm, Length: 34mm (exc. pins).
- 700FE-T** • 220-250V, 4-20W series starter switch.
 • Diameter: 21mm, Length: 34mm (exc. pins).

LIGHTING ACCESSORIES

LAMP HOLDERS

Cat No.	Description
501	Lamp holder plain
501S	Lamp holder plain with short skirt
501ES	Lamp holder Edison screw
501SK	Lamp holder skirt
503A	Screwed lamp holder 1/2 inch brass w/skirt
503B	Screwed lamp holder 3/8 inch brass w/skirt
503C	Screwed lamp holder 5/8 inch brass w/skirt
503D	Screwed lamp holder 3/4 inch brass w/skirt
503J	Screwed lamp holder 1/2 inch conduit w/skirt
503L	Screwed lamp holder 16mm inch conduit w/skirt
503M	Screwed lamp holder 20mm inch conduit w/skirt
503MWP	Screwed lamp holder
501A	Screwed lamp holder 1/2 inch brass
501B	Screwed lamp holder 3/8 inch brass
516	Luminaire lamp holder
520A	Switched B22 BC lamp holder 1/2 inch brass
520B	Switched B22 BC lamp holder 3/8 inch brass



BATTEN HOLDERS

Cat No.	Description
2530	Four piece BC
2530LT	Four piece BC, with plugs
2530T	Four piece BC, with captive plugs
2530SS	Four piece safety BC
530	Three piece BC straight
530T	Three piece BC with captive plugs
530LT	Three piece BC with plugs
530SS	Three piece BC straight
530SSLT	Three piece safety BC, straight with plugs
530S	Cable insulating sleeve
530ES	Edison screw
531	BC three piece with safety skirt
533	BC three piece with large base
533ES	Edison screw, large base
535ES	Adjustable Edison screw
535	Adjustable BC
536	Multi-position ring fits round junction box



LAMP HOLDER ACCESSORIES

Cat No.	Description
521A	Switched lamp holder - PVC nipple
521N	Switched lamp holder - hex nut
466	Lamp holder adaptor
548	Lamp holder adaptor - mounting flange, base only
548A	Lamp holder adaptor - mounting flange, angled
548S	Lamp holder adaptor - mounting flange, straight
548H	Lamp holder moulded hook



CEILING ROSES

Cat No.	Description
93	Four terminals
93/5	Five terminals
93S	Surface wiring ring
93BF	Flange with adjustable mounting holes
93ER	Extension ring



LIGHTING TERMINOLOGY

BALLASTS

Controls the current flowing through a fluorescent lamp. A low loss ballast consumes less watts per lamp and therefore produces less heat reducing electricity bills. Electronic ballasts are the most efficient.

BLOCKING INDUCTOR

An inductor (coil) wired in series with a fitting to present a high impedance to ripple control frequencies. When added to a power factor correction capacitor, it blocks the ripple control frequencies from reaching the capacitor and prevents them from being reduced in amplitude. Used in some areas of NSW.

COLOUR RENDERING (RA)

The ability of a lamp to give good colour representation of the object it is illuminating. The unit of measurement is RA. Some lamps have better colour rendering than others and should be selected for colour critical applications.

COLOUR TEMPERATURE (K)

Applications for different colour temperature lamps:
Use warm white for accentuating warm colours (red, brown cream, etc.) 3000K.
Use cool white with cool colours like grey and blue (4000K).
Use daylight colours in hot climates as a warm lamp makes people feel hotter (6000K).

DICHROIC

A coating on the reflector that allows some of the infrared (heat) energy created by the lamp to pass through the back of the fitting instead of being reflected forward.

DISCHARGE LAMPS

A lamp that produces light from an internal electric arc.

EMC REGULATION

Since January 1, 1999 Australian regulations have required that all light fittings comply with regulations concerning the amount of electrical interference produced by the fitting. This is of special concern to fluorescent fittings as they generate considerable interference (mainly from the lamp).

ENERGY EFFICIENCY INDEX

Designed to reduce energy bills and greenhouse gas emissions. Index provides the corrected total input power of the lamp and ballast circuit for that particular lamp and ballast combination. There are seven classifications or MEPS ratings: A1, A2, A3, B1, B2, C, D. The A1 classification is the most efficient.

EMERGENCY LIGHTING

Provides defined levels of light to enable safe exit from a building when the mains power has failed. It has to switch on automatically and operate from batteries for at least two hours.

GLARE CONTROL

Minimised by controlling the angle at which light is able to leave the luminaire. Such fittings are called low brightness luminaires. There are three methods of controlling the light angles: prismatic diffusers, egg crate diffusers and aluminium louvres.

GENERAL LIGHTING SERVICE (GLS)

Refers to a standard mains powered incandescent lamp.

GLARE RATING SYSTEMS

In Australia a glare index system is used, which takes into account the actual installation parameters as well as the luminaire. This system is a relative measurement of the visual discomfort of a seated observer who is looking straight ahead.

INCANDESCENT

A material (tungsten in the case of filament lamps) that is heated until it gives off visible light. The tungsten slowly evaporates and darkens the inside of the lamp. As the tungsten evaporates the filament becomes thinner and eventually breaks.

LIGHT EMITTING DIODES (LED)

In recent years LEDs have become more powerful and more multicoloured. They have almost reached a lumen output level that makes it possible to achieve useful output for use in luminaires.

LIGHTING CALCULATIONS

The utilisation factor table and a few simple formulas allow us to calculate the number of fittings required for any room. This is a value between 0 and 1. It takes into account the room reflectances, room shape, polar distribution and light output ratio of the fitting, however most computer programs accessing IES files now perform calculations.

LUMEN

The measurement of the total amount of light output from a lamp.

LUX

The measurement of the light intensity falling on a surface. One lux is equal to one lumen per square metre. The Australian standard AS/NZ1680 gives lux levels for many different industries.

METAL HALIDE

A version of the mercury vapour discharge lamp with additional chemical additives that produces a more natural light than standard mercury vapour. Good colour rendering.

POWER FACTOR

The relationship between an alternating voltage and current in a circuit. In a resistive circuit (e.g. heater, toaster, electric cooker) the current is in phase with the voltage. However, some devices with magnetic components in the circuit (e.g. ballasts) alter the phase relationship that causes extra current to be drawn for the same power output. Ballasts (being inductive components) cause the current to lag behind the voltage.

TRIPHOSPHOR LAMPS

Triphosphor fluorescent lamps have three different phosphors coating the inside of the lamp. Each phosphor operates in its own colour band (red, green and blue) to give an improved combined colour output.

**Schneider Electric (Australia) Pty Ltd**

33-37 Port Wakefield Road,
Gepps Cross, South Australia 5094

Website clipsal.com

Contact us clipsal.com/feedback

National Customer Care Enquiries:**1300 2025 25****National Customer Care Facsimile:****1300 2025 56****Area Representatives**

NSW	Albury	(02) 6051 2377
	Central coast	0418 430 361
	Coffs Harbour	0418 653 183
	Dubbo	0418 822 564
	Newcastle	0407 298 792
		0418 686 040
		0417 201 115
	Tamworth	0417 714 339
	Wagga Wagga	0418 578 903
	Wollongong	0418 423 581
ACT	Canberra region	0408 550 373
VIC	Ballarat	0418 336 291
	Bendigo	0418 570 213
	Geelong	0418 527 233
	Gippsland	0418 512 680
	Mornington Peninsula	0407 795 291
	Western Victoria	0419 380 444
QLD	Cairns	0418 778 499
	Gladstone	0427 172 463
	Gold Coast Nth	0417 863 872
	Gold Coast Sth	0418 765 459
	Mackay	0418 752 134
	Maryborough	0418 664 338
	Northern Rivers	0418 768 902
	Rockhampton	0427 172 463
	Sunshine Coast Nth	0419 797 827
	Sunshine Coast Sth	0438 282 299
	Toowoomba	0418 726 394
	Townsville	0418 180 372
WA	Bunbury	0418 931 684
	Kalgoorlie and Eastern Gold Fields	0417 928 981
	Karratha	0418 937 249
SA	Riverland/Mildura/ Broken Hill	0418 596 145
NT	Darwin	0409 282 307
TAS	North	0418 120 269
	South	0437 385 807

International Enquiries**International Sales and Marketing**

Email export@clipsal.com.au

Schneider Electric (NZ) Ltd

38 Business Parade South, Highbrook,
East Tamaki, Manukau 2013,
NEW ZEALAND

PO Box 15355, New Lynn,
Waitakere 0640, NEW ZEALAND

Telephone + 64 9 829 0490

Facsimile + 64 9 829 0491

Website www.schneider-electric.co.nz

Clipsal Customer Care

Freephone 0800 652 999

Freefax 0800 101 152

Email sales@nz.schneider-electric.com

Website www.clipsal.co.nz

www.schneider-electric.co.nz

You can find this brochure and many
others online in PDF format at:

clipsal.com

Follow the links off the home page
or access the following page directly:

clipsal.com/brochures

clipsal.com

Schneider Electric (Australia) Pty Ltd reserves
the right to change specifications, modify designs
and discontinue items without incurring obligation
and whilst every effort is made to ensure that
descriptions, specifications and other information
in this catalogue are correct, no warranty is given
in respect thereof and the company shall not be
liable for any error therein.

© 2011 Schneider Electric. All Rights Reserved.

Trademarks are owned by Schneider Electric
Industries SAS or its affiliated companies.