

Breaking the boundaries of technology

C-BUS Software

Control and
Management System



Contents -

Software



Contents - Software

2

Introduction to C-Bus Software

4

C-Bus Installation Software Version 2, 5000S/2

6

C-Bus Installation Software Version 3, 5000S/3

8

10

C-Lution Application Software, 5000CL Series

12

Schedule Plus Application Software Version 2, 5000SP Series

14

HomeGate Application Software Version 2, 5000HG Series

16

HomeSpeak Voice Recognition Software, 5000HS Series

18

C-Gate Server Software, 5000CG Series

3

Introduction to C-Bus Software

The C-Bus control and management system has a number of PC software based installation tools, application programs and 3rd party development tools available.

It is important to note that the C-Bus system is capable of running without a PC connected, as it utilizes a distributed intelligence architecture and therefore needs no central processor, such as PC, to run. However, Clipsal C-Bus PC based software applications can provide additional features and interface solutions requested by C-Bus system users.

The software-based installation tools allow simple and fast commissioning of a C-Bus system via point and click, Windows™ based Graphical Interfaces.

C-Bus software based development tools allow 3rd party developers to easily integrate software solutions into a real world C-Bus network.

Installation Software

Version 2 Installation Software

Version 2 installation software is a 16 bit Windows™ application used to program each C-Bus unit and to commission the C-Bus installation. The manuals detail the rules and guidelines for planning, programming and commissioning the C-Bus system. Software upgrades are available from the Internet.

Version 3 Installation Software

To be released in 2003, Version 3 C-Bus Installation Software is a 32 bit Windows™ application which supports Windows™ 98SE, ME, 2000 and XP. The software supports a new, unique Barcode Scanning programming feature. This allows the installer to scan the C-Bus packaging of each new unit to add the unit to the database. This ensures the correct unit type is added and saves the Installer having to select from a list of unit types. The software allows the Installer to define Unit Templates; this allows the Installer to use an existing unit to define a Template that can be reapplied to subsequent units of the same type.

Application Software

C-Lution

C-Lution provides a complete solution for real time control and monitoring of Clipsal C-Bus using clear and concise graphic images. It provides a software platform on which a customisable, graphical Windows™ interface to a C-Bus system can be built. Sophisticated animations can be created to display the operating status of the electrical services. The package includes a driver library to interface with proprietary equipment such as Building Management Systems, PLCs, etc. The Clipsal C-Lution environment is primarily based on a Client/Server architecture, operable through TCP/IP network connections. C-Lution is available for sale to approved Systems Integrators only.

Version 2 Schedule Plus

Schedule Plus application software provides a powerful and easy to use interface to C-Bus via a standard PC. Schedule Plus has been developed specifically for commercial and industrial applications. It provides scheduling, manual control and monitoring of a C-Bus system from a PC running Windows 95, 98, 2000, NT, ME or XP.

Version 2 HomeGate

The HomeGate application software provides a powerful but simple to use interface to C-Bus via a standard PC. HomeGate provides scheduling, manual control and monitoring of a domestic C-Bus system from a PC running Windows 95, 98, 2000, NT, ME or XP. HomeGate comprises of a project editor, real time monitoring and control, a real-time scheduler, security and access control and internet access. It also includes help and support documentation.

HomeSpeak

Clipsal HomeSpeak software, in combination with the Clipsal C-Bus Control and Management System allows control of lighting and other services in your home by speech and text input, using common phrases and sentences. HomeSpeak is available for sale to approved Systems Integrators only.

Development Software

C-Gate Server Software

The Clipsal C-Gate server is a software suite that monitors and controls the C-Bus Control and Management System. It has been produced by Clipsal Integrated Systems to allow third party software developers and existing Building Management Systems to interface to C-Bus at a high level, allowing high-speed control and monitoring of C-Bus. C-Gate is available for sale to approved Systems Integrators only.

Please note C-Bus software packages need to be programmed via a PC running the Microsoft Windows™ operating system. All Installers will require an appropriate level of training and experience before they can program Clipsal C-Bus software packages to customer requirements. A CIS Systems Integrator or CIS Approved Installer with the appropriate level of accreditation should therefore be used for software commissioning. Please contact a Clipsal C-Bus specialist in your State for further information.

C-Bus Software

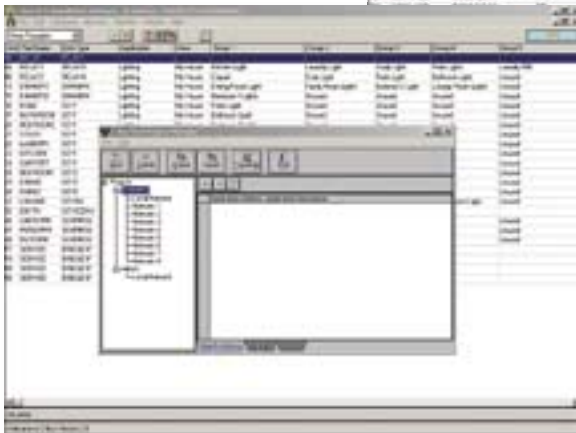
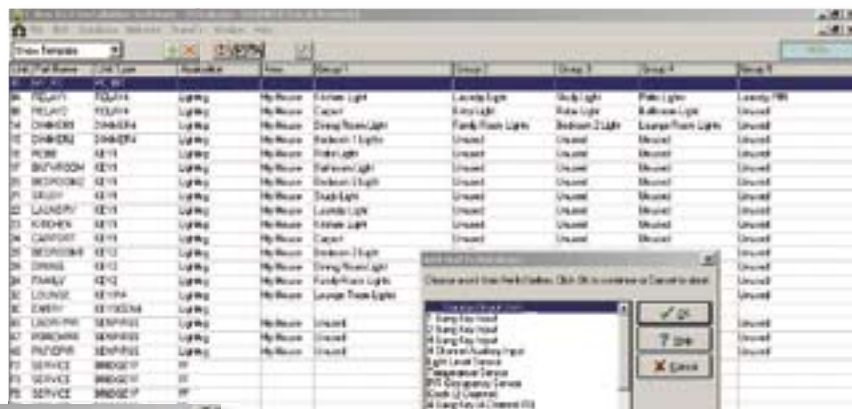


C-Bus Installation Software Version 2 5000S/2

Whilst a C-Bus 2 network can be configured using its Learn Mode feature the C-Bus Installation Software provides an easy to use and versatile PC based application for faster programming of more complex C-Bus configurations.

It is able to define the topology or connectivity of the C-Bus installation, establishing the routing information which permits the software to access any network in the installation from a single source. The software programs each C-Bus unit with its operating parameters and is able to define functional relationships, such as master switching and logical relationships between units.

It is backwards compatible with all existing installations and compatible with equipment currently under development. Current networks may be uploaded into the new program and databases are automatically updated to the new format used in the Version 2 software.



Features

- Version 2 software supports a wide range of units including Infrared and Scene Controllers, and Single and Dual Channel Relays.
- Addressing has been improved with Group, Network, Area and Application addresses now defined by 20 alphanumeric characters enabling meaningful descriptions to be assigned like 'Common Area Lights'.
- The Database Manager allows a user to transfer, save, import and export individual projects and databases to a different platform, including other PCs and save to a floppy disk. This makes it easy to program or maintain a building's electrical services from a remote location and download to the site over a modem.
- The Graphical User Interface enables fast programming and commissioning through simple and intuitive displays.
- Window view supports multiple screens to allow the user to view multiple networks and databases simultaneously.
- A toggle function allows the user to toggle the state of the C-Bus Group Addresses from the Network Manager screen, enabling quick identification of the physical load associated with the Group Address. The state of the Group Address is also available from the same screen.
- A Transfer function enables the user to transfer the contents to and from a C-Bus Network.



System Requirements

- Windows™ 3.11 or higher
- Available hard disk and system memory requirements will vary depending on how the software is installed.

Product Range

| Catalogue Number | Description |
|------------------|---|
| 5000S/2 | C-Bus v2.0 Installation Software and Technical Manual |
| 5000M/2 | C-Bus v2.0 Installation Software Technical Manual |

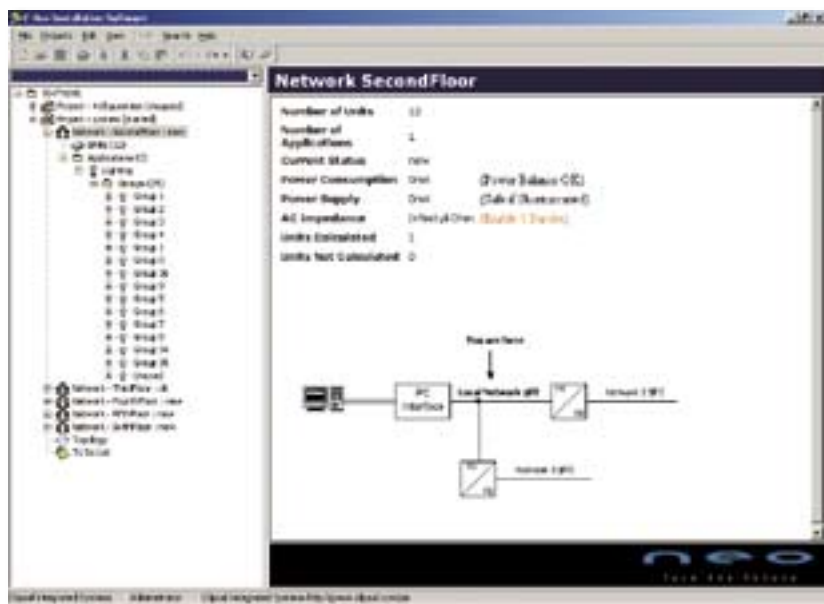


C-Bus Software



C-Bus Installation Software Version 3 5000S/3PRO

The Version 3 C-Bus installation software supports Windows™ 98SE, ME, 2000 and XP. The software supports a new and unique Barcode Scanning programming feature, in addition to traditional programming methods which are also supported. The barcode scanning technique allows the installer to scan the C-Bus packaging of each new unit to automatically add the unit to the C-Bus project database. This ensures the correct unit type is added and saves the installer having to select from a list of unit types. The software prints adhesive labels that can be affixed to C-Bus units, these labels include the unit Address and the Physical location that the unit is to be installed at. Labels are duplicated so that one label can be affixed to the unit and one to the electrical plan for the installation. The labels have barcodes on them so that units can be easily re-identified if required. The software allows the installer to define Unit Templates; this allows the installer to use an existing unit to define a Template that can be reapplied to subsequent units of the same type.



Features

- Full support for all existing and new C-Bus units.
- Compatible with all existing C-Bus installations programmed with Version 1 or 2 installation software.
- Full support for Windows™ XP operating system, as well as Windows™ 98SE, ME and 2000.
- Based on standard Windows Explorer style interface.
- Upgraded and fully integrated Topology Manager
- Upgraded and fully integrated Project Manager
- Upgraded and fully integrated C-Bus calculator
- Multiple concurrent users
- Remote programming of networks via the Internet
- New improved Unit Templates
- New improved Neo/Reflection/Saturn Scene Editor
- Customisable panel layout
- Support for programming using a barcode scanner, as well as the traditional (Version 2) programming methods.
- Printable adhesive bar code labels for unit identification
- Unit template feature allows the installer to reapply unit assignments quickly and easily.
- Comprehensive printable installers reports



- Includes a feature that allows the installer to easily view the Group Address correlation between input and output devices.
- Active software updates via the Internet.

System Requirements

- Windows™ 98SE or higher
- Available hard disk and system memory requirements will vary depending on how the software is installed

Product Range

| Catalogue Number | Description |
|-------------------|--|
| 5000S/3PRO | C-Bus Version 3 Installation Software and Technical Manual |
| 5100BCS | Barcode Scanner |



C-Bus Software



C-Lution Application Software 5000CL Series

C-Lution is C-Bus Application Software primarily suited to high end and complex commercial applications. The software enables a user to configure a Graphical User Interface (GUI) control monitor and schedule devices on a C-Bus network via a PC or Internet browser.

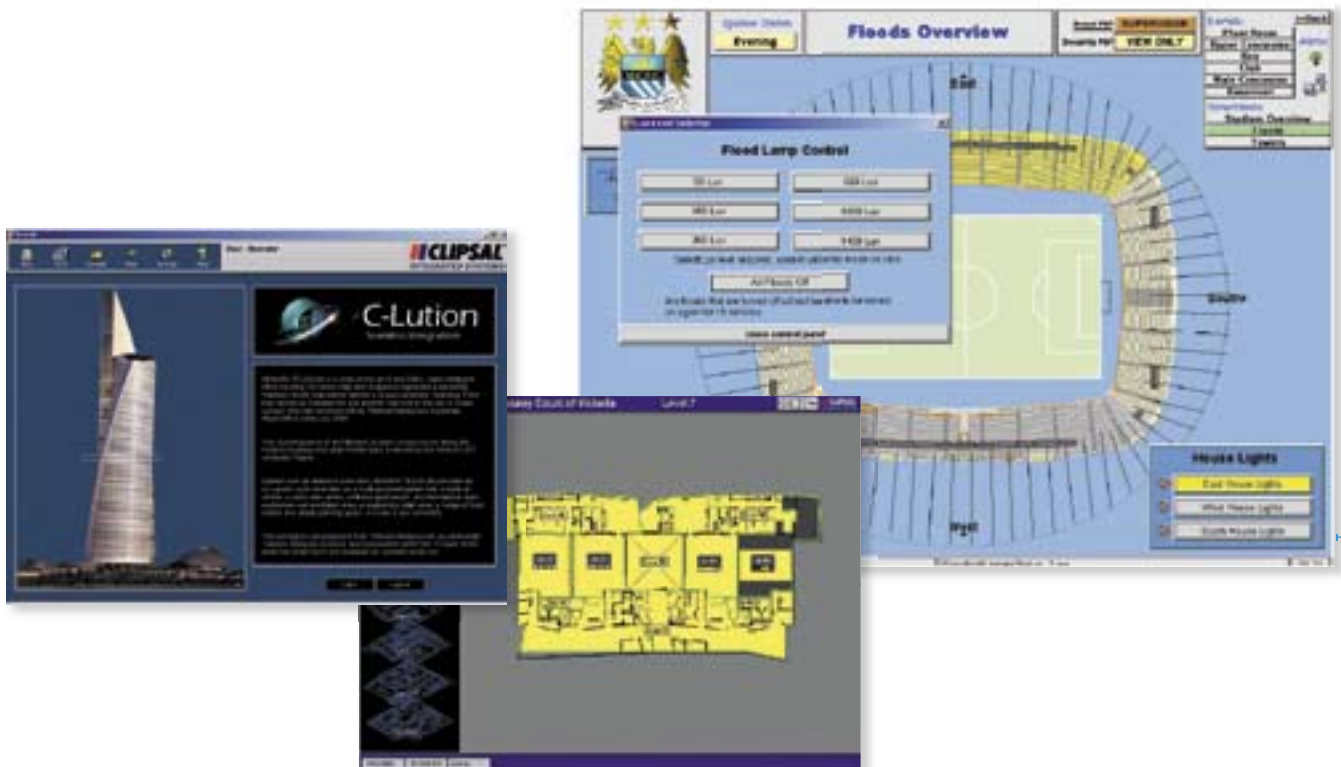
The Clipsal C-Lution Application Software is an end user software application that provides a complete solution for real time control and monitoring of Clipsal C-Bus using clear and concise graphic images.

C-Lution provides a software platform on which a customisable, graphical Windows™ interface to a C-Bus system can be built. A multi-windowed, 'point and click' environment can therefore be designed and tailored to completely suit individual clients' requirements. The user can create sophisticated animation to display the operating status and performance of the electrical services in the premises. A history log ensures that specified parameters and events are logged with historical and real-time trending available in graphical form. C-Lution can be used to produce periodic and event driven reports.

C-Lution can be used to monitor, control and log all alarms. The integrity of the installation may be tested by C-Lution. An alarm can be programmed to alert the user if a C-Bus device is removed or added to the system. The user can also program a multi-layered security system that allows personnel access to the areas of a building's electrical services within their control.

The C-Lution package includes a driver library to interface with proprietary equipment such as Building Management Systems (BMS), Programmable Logic Controllers (PLC), Remote Terminal Units (RTU), etc. Over 130 protocols are available upon request.

The Clipsal C-Lution environment is primarily based on a Client/Server architecture allowing for a bundled purchase of both server based licenses and client display licenses. Client licenses are operable through TCP/IP network connections allowing for advanced central systems monitoring and information gathering.



Features

- The software supports an unlimited number of users. For each user, it is possible to define a password and the privilege level(s) and areas that are available to that user.
- The software does not limit the number of Alarms. The software monitors variables and calculated conditions, and determines if the variable is in an alarm condition.
- The software is capable of logging historical data. Each file contains up to one year of historical data.
- The C-Lution Software can perform report generation, scheduling and management.
- The software permits reports to be scheduled for a specific time of day, on a periodic basis or upon operator request, or event initiated (e.g. lights OFF).
- The software supports logging of all operator actions to disc, printer or screen.
- A utility is included to back-up or restore an entire database including all graphic displays and configuration data.
- A time scheduling module is available for C-Lution to allow events to be generated automatically based on the time of day, week or month.



- Clipsal C-Lution and C-Bus together can be used for:
 - Lighting control and monitoring
 - Simple ON-OFF control
 - Dimming
 - Scene Setting
 - Time Scheduling
 - Graphic control interface for building

Product Range

| Catalogue Number | Description |
|------------------|---|
| 5000CL150 | C-Lution Software & Technical Manual, 150 Network Licence |
| 5000CL500 | C-Lution Software & Technical Manual, 500 Network Licence |
| 5000CL1500 | C-Lution Software & Technical Manual, 1500 Network Licence |
| 5000CL15K | C-Lution Software & Technical Manual, 15,000 Network Licence |
| 5000CLUNL | C-Lution Software & Technical Manual, Unlimited Network Licence |



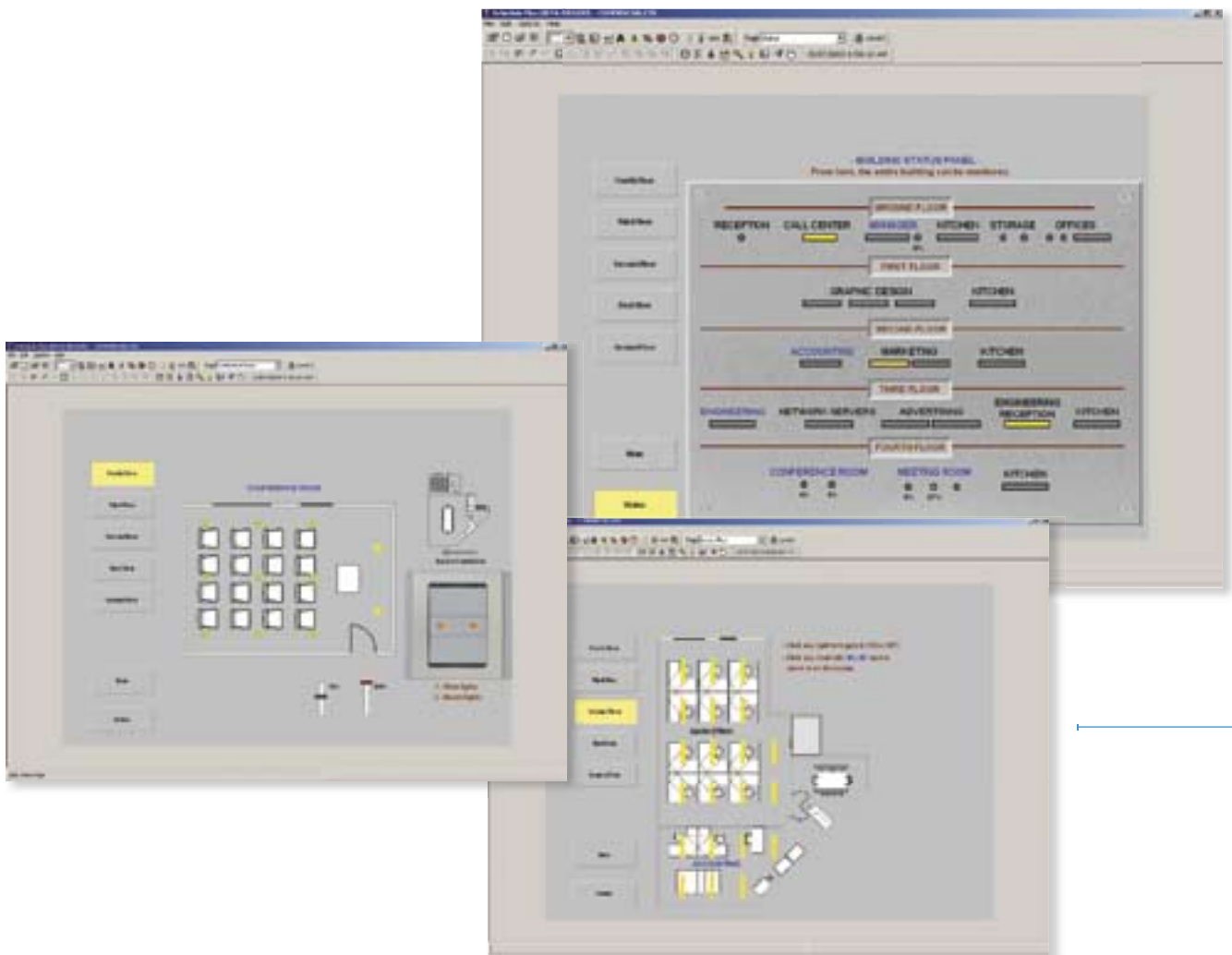
C-Bus Software



Schedule Plus Application Software Version 2 5000SP Series

Schedule Plus is a powerful C-Bus Management software primarily suited to small to medium commercial applications. The software enables a user to configure a Graphical User Interface (GUI) to control, monitor and schedule devices on a C-Bus network via a PC or Internet browser through the internet.

Schedule Plus also reports the state of the C-Bus Group Addresses on a Network in real-time, with Group Addressing represented by text or icons that change condition depending on status. To represent various Group Address states custom icons can be generated or icons from the icon library, provided with the package, can be used.



Features

- Supports Microsoft Windows™ 95, 98, 2000, NT, ME and XP.
- Uses Clipsal C-Gate Communication Server technology.
- Connection to C-Bus via an Ethernet or C-Gate RS-232 Connections.
- Single, Five and Unlimited Network software licence options.
- Scheduled events can be created, displayed, edited and printed.
- Events can be scheduled Daily, Weekly, Weekdays, Weekends, Monthly and Once Off.
- Scheduled events can have the following properties set:
 - Send C-Bus command (on / off / ramp & ramp rate)
 - Send pulsed C-Bus Commands
 - Set Scenes
 - Set time of event
 - Set repeat cycle of event (once / daily / weekly / weekdays / weekends / monthly)
- Schedule status can be altered from active to inactive and vice versa either within the program or using a C-Bus input unit.
- The following graphical components can be placed on a page:
 - Text
 - Buttons and Sliders
 - Real-time clock
 - Shapes and Images (bitmaps, WMF, JPEG)
 - C-Bus timer clock
 - Percentage indicator
 - Light level and Temperature
- The following properties of a component can be set-up:
 - C-Bus Network parameters
 - Position and size
 - Font style and colour
 - Images, text and Image alignments
 - Border width, colour, line style and shape
 - Background colour and shading
- A displayed item can have the following associated actions:
 - C-Bus Command (on / off / ramp)
 - Scene activation
 - Scene activation via C-Bus scene controllers
 - Link to another page
 - Exit simulation mode
 - Go back one page
 - External Windows Applications can be executed



- Sound Files (WAV) can be executed.
- Page templates and an image library are included.
- Page size can be any of the standard screen sizes (VGA, SVGA etc) and custom sizes.
- C-Bus Touch Screen projects can be imported and easily resized for Schedule Plus.
- An event log is incorporated.
- Project, owner and installer details can be entered and the complete project can be saved to a file.
- A project summary can be viewed and printed.
- Incorporates a facility for automatic project error checking and reporting.
- Two modes, Normal Operation or Project Editing.
- Individual pages can be password protected.

Product Range

| Catalogue Number | Description |
|------------------|--|
| 5000SP/2 | Schedule Plus Software & Technical Manual, Single Network Licence |
| 5000SP5/2 | Schedule Plus Software & Technical Manual, 5 Network licence |
| 5000SPUNL/2 | Schedule Plus Software & Technical Manual, Unlimited Network licence |
| 5000SPUP1/2 | Schedule Plus Software Version 1 to Version 2 Upgrade Pack |



C-Bus Software



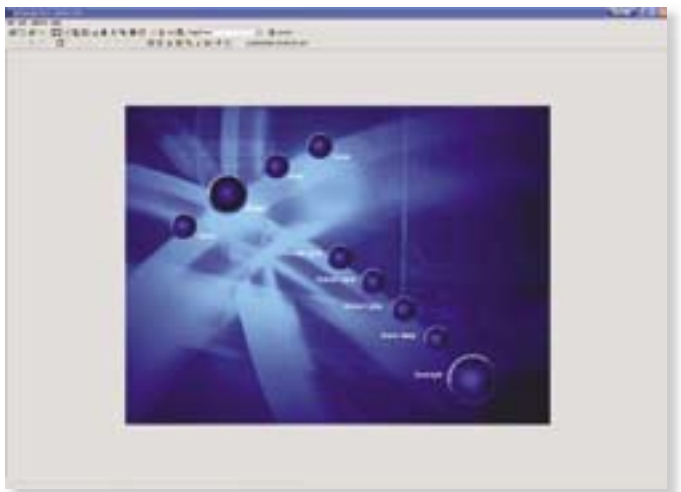
HomeGate Application Software Version 2 5000HG Series

HomeGate is a powerful and simple to use C-Bus Control & Management software for domestic applications. The software enables a user to control, monitor and schedule devices on a C-Bus network via a PC or Internet browser through the internet.

The software has an intuitive Graphical User Interface. The Menu and Tab based options, combined with graphical icons, enable a user to easily navigate between multiple pages.

Project Editing Mode enables the user to customise the user interface, including full colour graphic icons. Icons can either be generated or lifted from the icon library that is provided with the package. These icons are easily programmed to activate a C-Bus function when pressed.

Operation Mode, enables the user to execute the programmed actions by clicking components on the screen. It can also edit and create C-Bus scenes and initiate real-time based schedules of events.



Features

Standard PC operating Microsoft Windows™ 95, 98, 2000, NT, ME or XP. Uses Clipsal C-Gate Server Application (supplied with HomeGate). Connection to C-Bus via an Ethernet Connection or a C-Gate RS-232 Connection. Graphical components able to be placed on a page:

- Text
- Buttons and Sliders
- Shapes and Images (bitmaps, WMF, JPEG)
- Real-time clock
- C-Bus timer clock
- Percentage indicator
- Light level and Temperature
- C-Bus Network Voltage
- Personalisations to user interface items can include:
 - Position and size
 - Font style and colour
 - Images
 - Text and Image alignments
 - Border width, colour, line style and shape
 - Background colour and shading
- A displayed item can have the following associated actions:
 - C-Bus Command (on / off / ramp)
 - Scene activation
 - Scene activation via C-Bus scene controllers
 - Link to another page
 - Exit simulation mode
 - Go back one page
- Operation over remote applications
Scheduled events can have the following properties set:
 - Send C-Bus command (on / off / ramp & ramp rate)
 - Send pulsed C-Bus Commands
 - Set Scenes
 - Set time of event
 - Set repeat cycle of event (once / daily / weekly / weekdays / weekends / monthly)
- Schedule status can be altered from active to inactive, and vice versa either within the program or using a C-Bus input unit.



- External Windows Applications can be executed.
- Sound Files (WAV) can be executed.
- Page templates and an image library are included.
- Page size can be any of the standard screen sizes (VGA, SVGA etc) and custom sizes.
- C-Bus Touch Screen projects can be imported and easily resized for HomeGate.
- An event log is incorporated.
- Project, owner and installer details can be entered
- Complete project can be saved to a file.
- A project summary can be viewed and printed.
- Incorporates a facility for automatic project error checking and reporting.
- Individual pages can be password protected.

Product Range

| Catalogue Number | Description |
|------------------|--|
| 5000HG/2 | HomeGate Software & Technical Manual, Single Network Licence |
| 5000HG5/2 | HomeGate Software & Technical Manual, 5 Network Licence |
| 5000HGUP1/2 | HomeGate Software, Version 1 to Version 2 Upgrade Pack |



C-Bus Software



HomeSpeak Voice Recognition Software 5000HS

The Clipsal HomeSpeak Voice Recognition Software is the world's first true natural language Electronic Partner. Used in combination with Clipsal's innovative C-Bus wiring system, HomeSpeak can be used to control lights and appliances in the home. HomeSpeak enables control of these devices by speech, or by text input using a computer keyboard.

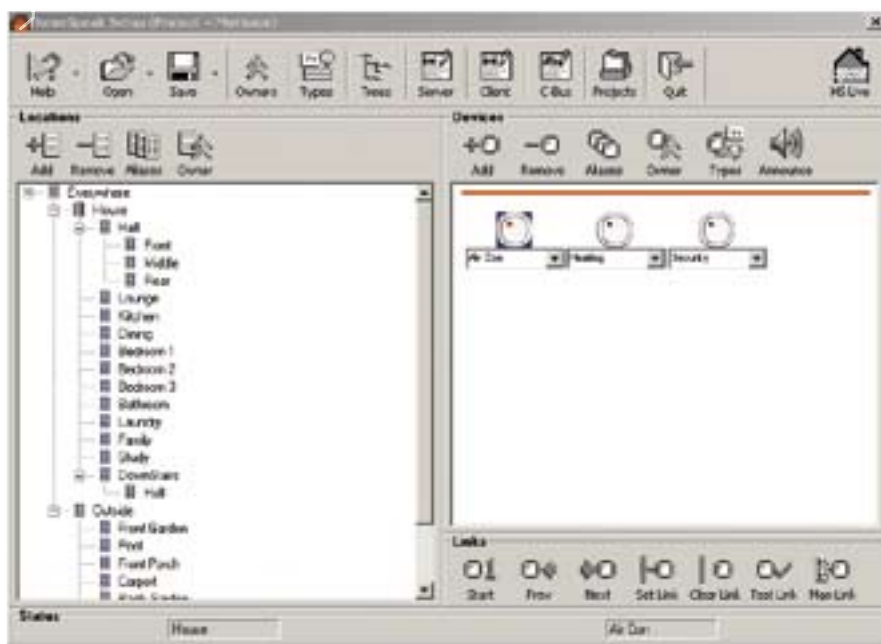
With HomeSpeak Software, there is no need to learn complex home automation commands - simple everyday language will do. Once HomeSpeak's name (or 'call sign') is defined, the system can be controlled by voice. If for instance, HomeSpeak's call sign is defined as 'Ep', the phrase 'Ep, set the dinner party scene' will cause various lights in the house to be switched off, and others turned on, all at the appropriate intensity and dimming rates, thus creating the mood lighting for dinner.

The HomeSpeak Software depends upon the Clipsal C-Gate Server product (refer C-Gate Server Software, 5000CG Series) with a connection to a C-Bus Network and a microphone to receive spoken commands.

The language used to control HomeSpeak can be very flexible; the phrase 'Ep, turn the dinner party scene on' would have the same effect as 'Ep, set the dinner party scene on' or 'Ep, dinner party on'. The phrases used to communicate with HomeSpeak will naturally fluctuate, according to mood. For example, 'Ep, we have another dinner party to arrange tonight, set the scene!' The result would be the same as the more enthusiastic version.

HomeSpeak can not only set scenes and turn numerous lights on and off, but the intensity of individual lights can be controlled within very narrow limits, something that is not possible with conventional lighting systems. 'Ep, dim all the lights upstairs by 70%' can be a valid HomeSpeak command. It is also possible to control the time at which events take place using sentences such as 'Ep, set the dinner party scene for 8.30 pm tonight'.

Your Electronic Partner is always listening. Ep does not sleep once the socialising starts. While dinner is in progress, suitable music can be played on the computer sound system by saying 'Ep, play from track 2 on the CD'. There is no restriction to the use of speech when Ep has to get to work. It is also possible to use a computer keyboard.



Features

- Supplied with Clipsal C-Gate Application Software Dragon Systems, Naturally Speaking Software and a hard wired headset microphone.
- Continuous speech recognition by using everyday language to control devices such as lights, security systems, radios, televisions, etc.
- Commands that can be delivered into a simple text box, via speech, or using a computer keyboard.
- Remote control of the home through the Internet.
- Activation by a chosen name (also called a “call sign”). This unique feature overcomes the problem of inadvertent commands in conversation causing an effect. The call sign is ‘user configurable’. Call signs such as “Ep”, “Fred”, “Zen” and “partner” are allowed. There is no limit to the number of these.
- A feature that allows voice annunciation using pre-recorded messages or computer generated speech. This provides confirmation to the user that HomeSpeak has understood and acted on the requested command.
- Software that caters for on, off and dimmer control of devices connected to C-Bus wiring systems. Scene controllers can also be set.
- Play, stop, pause, play track, open, shut commands to control CD Players attached to the computer running the software.
- Virtual scene setting to allow control of multiple devices simultaneously.
- Timer setting function for command execution every day or a particular day.



- Control of all devices for simultaneous operation.
- Control of all devices independently from a simple, single, everyday language interface.
- Interchangeable use of both speech and text interface.
- A stored log file of all commands issued and executed.
- A user friendly GUI to enable simple configuration of the system and featuring one step automatic linking to wiring.
- Configuration of the following system features:
 - Device names and associated aliases
 - Enable/disable command logging
 - Enable/disable speech input
 - Enable/disable command confirmation
 - Change and add call sign
 - Change speaker name
 - Enable/disable speech response

Product Range

| Catalogue Number | Description |
|------------------|---|
| 5000HS | HomeSpeak Voice Recognition Software, 1 Network Licence |



C-Bus Software



C-Gate Server Software 5000CG Series

The Clipsal C-Gate Server Software has been produced to allow users to interface to a Clipsal C-Bus system via PC, or the internet using Schedule Plus, HomeGate or other software applications like a building management system.

C-Gate server software is run on a PC and uses industry standard TCP/IP interfaces. Using TCP/IP opens the ability to control, connect to, monitor and Internet-enable a C-Bus system.

To connect to a C-Bus network, C-Gate opens a connection to a C-Bus PC Interface through a local serial port or a C-Bus CNI (model 5500CN) through a TCP/IP socket connection.

Once connected, C-Gate scans each C-Bus network and builds an object model of the network and the network's C-Bus units.

This model is the base that C-Gate uses for control and monitoring and allows:

- C-Gate to rapidly give up-to-date information about the status of C-Bus without having to poll individual C-Bus devices.
- C-Gate to control C-Bus loads, collect and use information from C-Bus networks, or provide a monitoring and control interface for a separate building management system.
- Software applications or building management systems connect to C-Gate's Command Interface and can issue commands (such as ON, OFF and RAMP) and query the status of any object (using the GET and SET commands) in C-Gate's model of each network.
- C-Gate to provide several interfaces to allow third party applications or building management systems to receive a continuous real-time list of events that have occurred on the C-Bus networks that C-Gate is managing.

```
clipsal-remote@C-Gate:~$ cat /usr/local/bin/cgate
# C-Gate Server Software
# Copyright (c) 2000 Clipsal Limited
# All rights reserved.
# This program is free software; you can redistribute it and/or
# modify it under the terms of the GNU General Public License
# as published by the Free Software Foundation; either version 2
# of the License, or (at your option) any later version.
# This program is distributed in the hope that it will be useful,
# but WITHOUT ANY WARRANTY; without even the implied warranty of
# MERCHANTABILITY or FITNESS FOR A PARTICULAR PURPOSE.  See the
# GNU General Public License for more details.
# You should have received a copy of the GNU General Public License
# along with this program; if not, write to the Free Software
# Foundation, Inc., 59 Temple Place, Suite 330, Boston, MA 02111-1307,
# USA.
#
# C-Gate Server Software
# Copyright (c) 2000 Clipsal Limited
# All rights reserved.
# This program is free software; you can redistribute it and/or
# modify it under the terms of the GNU General Public License
# as published by the Free Software Foundation; either version 2
# of the License, or (at your option) any later version.
# This program is distributed in the hope that it will be useful,
# but WITHOUT ANY WARRANTY; without even the implied warranty of
# MERCHANTABILITY or FITNESS FOR A PARTICULAR PURPOSE.  See the
# GNU General Public License for more details.
# You should have received a copy of the GNU General Public License
# along with this program; if not, write to the Free Software
# Foundation, Inc., 59 Temple Place, Suite 330, Boston, MA 02111-1307,
# USA.
#
# C-Gate Server Software
# Copyright (c) 2000 Clipsal Limited
# All rights reserved.
# This program is free software; you can redistribute it and/or
# modify it under the terms of the GNU General Public License
# as published by the Free Software Foundation; either version 2
# of the License, or (at your option) any later version.
# This program is distributed in the hope that it will be useful,
# but WITHOUT ANY WARRANTY; without even the implied warranty of
# MERCHANTABILITY or FITNESS FOR A PARTICULAR PURPOSE.  See the
# GNU General Public License for more details.
# You should have received a copy of the GNU General Public License
# along with this program; if not, write to the Free Software
# Foundation, Inc., 59 Temple Place, Suite 330, Boston, MA 02111-1307,
# USA.
```

```
clipsal-remote@C-Gate:~$ cat /usr/local/bin/cgate
# C-Gate Server Software
# Copyright (c) 2000 Clipsal Limited
# All rights reserved.
# This program is free software; you can redistribute it and/or
# modify it under the terms of the GNU General Public License
# as published by the Free Software Foundation; either version 2
# of the License, or (at your option) any later version.
# This program is distributed in the hope that it will be useful,
# but WITHOUT ANY WARRANTY; without even the implied warranty of
# MERCHANTABILITY or FITNESS FOR A PARTICULAR PURPOSE.  See the
# GNU General Public License for more details.
# You should have received a copy of the GNU General Public License
# along with this program; if not, write to the Free Software
# Foundation, Inc., 59 Temple Place, Suite 330, Boston, MA 02111-1307,
# USA.
#
# C-Gate Server Software
# Copyright (c) 2000 Clipsal Limited
# All rights reserved.
# This program is free software; you can redistribute it and/or
# modify it under the terms of the GNU General Public License
# as published by the Free Software Foundation; either version 2
# of the License, or (at your option) any later version.
# This program is distributed in the hope that it will be useful,
# but WITHOUT ANY WARRANTY; without even the implied warranty of
# MERCHANTABILITY or FITNESS FOR A PARTICULAR PURPOSE.  See the
# GNU General Public License for more details.
# You should have received a copy of the GNU General Public License
# along with this program; if not, write to the Free Software
# Foundation, Inc., 59 Temple Place, Suite 330, Boston, MA 02111-1307,
# USA.
```

Features

- Runs on a PC and uses industry-standard TCP/IP interfaces.
- Allows connection to C-Bus networks across a TCP/IP backbone network or through a local RS232 interface.
- Allows connection to one or more C-Bus networks from other software or systems.
- Can be used to effectively manage a number of C-Bus networks in parallel at high speed.
- Provides an Internet or TCP/IP interface to:-
 - Control and monitor C-Bus networks via third party software.
 - Control a C-Bus network from another building management system.
 - Use a custom front-end or user interface to C-Bus when required.
- Since C-Gate maintains an object model of the networks in memory, the status of all connected networks can instantly be displayed by C-Gate without having to wait for the network to respond.
- C-Gate Commands and Events use a logical addressing system to refer to C-Bus networks, groups and devices.
- The C-Gate Command Interface allows a system to control and get the status of C-Bus groups and units on the networks.
- The command interface is based on a simple set of text commands and formatted responses delivered via a TCP/IP socket.
- The C-Gate Event interface captures monitored C-Bus information and makes this available to external systems.
- Captured Events can be distributed as a text file, to a TCP/IP socket interface on a remote computer, to a connection made to the C-Gate event-port number or to a local printer.



Product Range

| Catalogue Number | Description |
|------------------|---|
| 5000CG | C-Gate Software & Technical Manual, 1 Network Licence |
| 5000CG5 | C-Gate Software & Technical Manual, 5 Network Licence |
| 5000CG10 | C-Gate Software & Technical Manual, 10 Network Licence |
| 5000CG50 | C-Gate Software & Technical Manual, 50 Network Licence |
| 5000CGUNL | C-Gate Software & Technical Manual, Unlimited Network Licence |



**Products of
Clipsal Integrated Systems Pty Ltd**

ABN 15 089 444 931

Head Office

12 Park Terrace, Bowden
South Australia 5007

PO Box 103 Hindmarsh
South Australia 5007

Telephone (08) 8269 0560
International +61 8 8269 0560

Facsimile (08) 8346 0845
International +61 8 8346 0845

Internet www.clipsal.com/cis
E-Mail cis@clipsal.com.au

Offices in all States

NSW Sydney (02) 9794 9200
Albury (02) 6041 2377

VIC Melbourne (03) 9207 3200
Country Areas 1800 653 893

QLD Brisbane (07) 3244 7444
Townsville (07) 4729 3333

SA Adelaide (08) 8268 0400

WA Perth (08) 9442 4444

TAS Launceston (03) 6343 5900

NT Darwin (08) 8947 0278

International Enquiries

Head Office Export Department

Telephone +61 8 8269 0587
Facsimile +61 8 8340 7350
E-Mail export@clipsal.com.au

New Zealand

Clipsal Industries (NZ) Ltd (Auckland)
Telephone +64 9 576 3403
Facsimile +64 9 576 1015
E-Mail headoffice@clipsal.co.nz

Customer Service

Free Facsimile (0508) 250 305
Auckland/
Mobile Phone (09) 572 0014
Free Phone (0508) CLIPSAL
2547725

Malaysia

Clipsal Integrated Systems (M) Sdn Bhd
Unit 3-2, Level 3, CP Tower
No 11, Jalan 16/11,
Pusat Dagang Seksyen 16
46350 Petaling Jaya
Selangor Darul Ehsan, Malaysia
Telephone +60 3 7665 3555
Facsimile +60 3 7665 3155
E-Mail clipsal@clipsaltech.com.my

Singapore

CIS Pte Ltd (Singapore)
No. 8, Jurong Town Hall Road
#24-05-06 The JTC Summit
Singapore 609434
Telephone +65 266 1998
Facsimile +65 266 3922
E-Mail clipsal@clipsaltech.com.sg

International Representatives

China

Clipsal China Ltd
Telephone +86 755 246 1122

Greece

Clipsal Hellas S.A.
Telephone +30 1 0993 9165

Hong Kong

Clipsal Integrated Systems (HK) Limited
Telephone +852 2 487 0261

South Africa

Clipsal South Africa (Pty) Ltd
Telephone +27 11 314 5200

Taiwan

Clipsal (Taiwan) Co Ltd
Telephone +886 2 2558 3456

Thailand

Clipsal Thailand Ltd
Telephone +66 2 952 5338

United Kingdom

Clipsal Ltd (UK)
Telephone +44 1494 521 111

You can find this brochure and many others online in PDF format at:
clipsal.com

Follow the links off the home page or access the following page directly:
clipsal.com/wat_lib_pdf.cfm

clipsal.com/cis

Clipsal Integrated Systems Pty Ltd reserves the right to change specifications, modify designs and discontinue items without incurring obligation and whilst every effort is made to ensure that descriptions, specifications and other information in this catalogue are correct, no warranty is given in respect thereof and the company shall not be liable for any error therein.

©Copyright Clipsal Integrated Systems Pty Ltd
Printed by Custom Press Pty Ltd (08) 8346 7999