

Milestone Systems

XProtect™ Corporate



In large-scale installations, XProtect Corporate provides exceptional surveillance overview and control.

Premium software with no limits

Milestone XProtect™ Corporate is powerful, open platform IP video management software. It is designed for large-scale security implementations, supporting an unlimited number of cameras, users and sites. Easy-to-use access clients integrate with interactive multi-layered maps and provide operators with exceptional surveillance overview and control. Built-in support for Smart Wall – Milestone's video wall functionality with drag-and-drop capabilities and flexible configuration – enables seamless command center control.

When there's no room for error

XProtect Corporate provides peace of mind for high risk, large-scale security installations with failover servers that ensure uninterrupted access to both live and recorded video, even if the system integrity is compromised. Additionally, extensive audit logging increases accountability and internal visibility and helps deter system tampering by tracking all users and management activities.

The Milestone open platform is your foundation for success

Milestone is the world's leading provider of open platform IP video surveillance software. XProtect is designed with open architecture that allows for integration with the widest choice of network video and computer hardware. The XProtect products interface with more than 840 IP cameras, encoders and select DVRs from over 80 different manufacturers. Committing to providing a true IP video open platform and freedom of choice, Milestone is proud to be among the first VMS vendors to support ONVIF and PSIA standards.

The open platform lets you optimize your security installation with today's and tomorrow's best-of-breed solutions since hardware is decoupled from software. By integrating IP video with multiple security systems and video analytics, you gain true value-adding efficiency and expand your capabilities.

- ◆ **Limitless:** XProtect Corporate supports an unlimited number of cameras, servers, sites and users allowing you to grow your installation according to your needs. You have the freedom to choose the optimal hardware for your installation and seamlessly integrate with best-of-breed third-party business solutions and security devices.
- ◆ **Intuitive:** With all XProtect products, the focus is on usability. XProtect Corporate's innovative central administration, intuitive wizards, flexible rules system and automatic network scanning and camera model detection allow you to easily manage and tailor your surveillance solution to your business requirements.
- ◆ **Cost-Effective:** XProtect Corporate's unique archiving model lets you reduce the high cost of storage by using fast, local disks for short-term recordings and affordable network storage for long-term archiving.



The Open Platform Company

Complexity made simple

Milestone's top-of-the-line product, XProtect Corporate is the powerful IP surveillance solution preferred for large, high risk security installations. Despite its breadth of features, XProtect Corporate is straightforward to operate and intuitive to manage since it was designed with usability in mind.

You can focus on security and not be overwhelmed by technology with XProtect Corporate's wizards, centralized management, flexible rules system, automatic network scanning and camera model detection. With Milestone, there is also tight integration with IT environments for maintaining a high level of system integrity. Working with Microsoft Active Directory® provides strict user authorization and all configurations, activity logs and alerts are conveniently stored in a Microsoft SQL database.

In XProtect Corporate, all daily operations are executed through the Milestone XProtect Smart Client, an easy-to-use client application for integrated video access and surveillance control. Flexible camera views give seamless access to live and recorded video from up to 100 cameras per view and cameras are easily controlled through integrated PTZ (Pan-Tilt-Zoom) control and digital zoom. Integrated devices and systems can be intuitively controlled through overlay buttons and the user interface is easily customized according to skill-level and work tasks helping reduce training and operator costs.

XProtect Smart Client also provides advanced features such as Smart Search, Instant Playback and Sequence Explorer to investigate incidents as they happen while also analyzing recorded video material.

XProtect Corporate also includes a state-of-the-art mapping function that portrays the entire surveillance installation in interactive, multi-layered maps. With the mapping functionality, you can intuitively navigate through clickable hot-zones, preview cameras by "mousing over" them, and get real-time updates of system components displayed directly on the map.

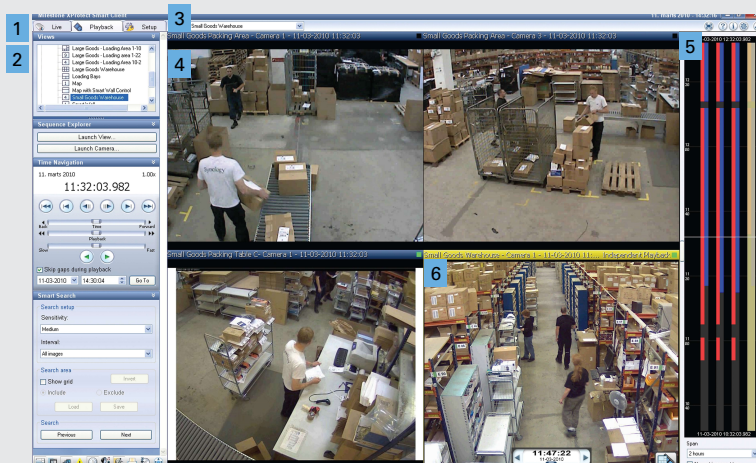
Smart Client main components

1. Selection of:

- ◆ Live Video
- ◆ Playback
- ◆ Setup

2. Control Pane:

- ◆ Selection of views
- ◆ Sequence Explorer
- ◆ I/O control
- ◆ Event management
- ◆ PTZ control
- ◆ Playback control
- ◆ Smart search
- ◆ Export



3. View selector

- ◆ Private and shared pre-defined camera views

4. Wide range of layouts:

- ◆ Matrixes
- ◆ Hotspots
- ◆ Carousels

5. Time synchronization of cameras in playback

6. Independent Playback of selected cameras

Smart Wall simplifies management of complex sites

Milestone's Smart Wall for XProtect Corporate is an advanced video wall product that provides supreme situational awareness for large surveillance installations and integrates seamlessly with the XProtect Smart Client and map functions.

The Smart Wall is an add-on product that allows you to easily populate layouts by using the Smart Wall builder. You have dynamic control of the layout and content is easily added by dragging and dropping cameras into the monitor views. There is no limitation to the number of screens for each Smart Wall, and one or several view presets can be defined to control the layout (grid) and actual content/camera(s).

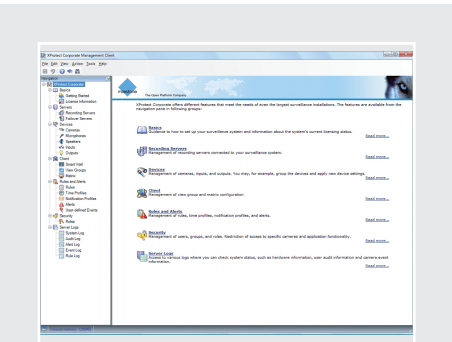
The XProtect Smart Wall offers a uniquely efficient working environment and can greatly improve the response time in large installations since you can focus on critical areas. Additionally, the Smart Wall is a cost-effective solution because it is hardware independent; freeing you to choose the right solution for your installation.



Easily drag-and-drop cameras and complete layouts into a Smart Wall view from the map or control pane and the altered monitor(s) are updated instantly.

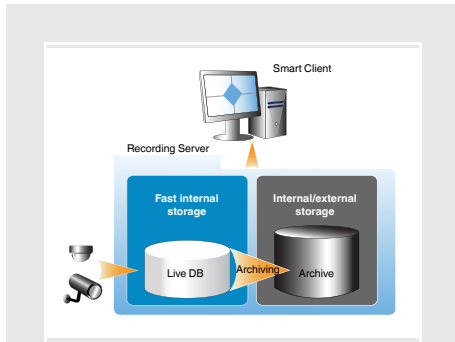
Powerful features that reduce complexity

As the leader in IP video surveillance, Milestone exceeds in designing software to effectively and efficiently manage complex security installations. The unique open architecture and scalability of Milestone's software offer the flexibility to tailor your installation for your specific needs. Milestone's comprehensive Software Development Kit (SDK) with its rich Application Programming Interfaces (API) enable integrations with systems such as video analytics, access control, alarms, Point of Sale (POS), Automatic Teller Machines (ATM) and gate barriers.



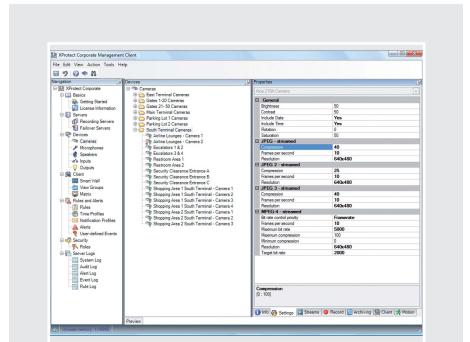
Easy management of complex systems

XProtect Corporate's centralized management enables efficient administration of large and distributed surveillance installations. Intuitive wizards and bulk handling of devices, users, and system settings significantly simplifies system operations and reduces overhead. Additionally, the easy-to-use navigation panel provides a clear overview and access to the system configuration data.



Reduce the cost of storage

XProtect Corporate has a unique archiving structure that can reduce the high cost of storage by using fast local disks for short-term recordings and affordable network storage for long-term archiving. With instant access to all recordings, you can configure the system to move video multiple times per day to local or network drives while recording is active, and configure individual scheduling and retention time per camera or camera group.



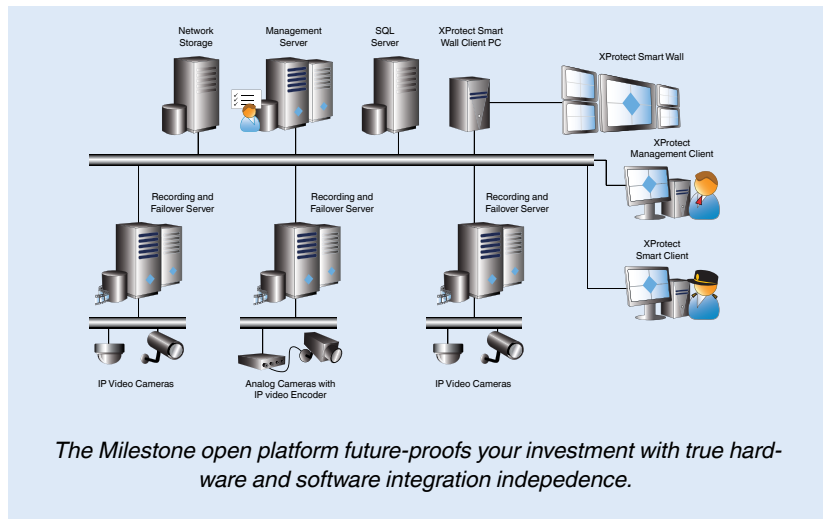
Preserve bandwidth with multi-cast and multi-stream support

Multi-casting significantly preserves bandwidth in situations where several users require the same live view. Multi-casting sends one video stream to multiple smart clients and is especially useful for installations with Smart Wall. Multi-streaming establishes two independent streams - live and recorded - from a supported camera. The resolution and frame rate can be optimized for your particular use and production of evidence.

XProtect Corporate includes these superior features:

- Intuitive map application:** Cameras, speakers, and Input/Output devices are graphically represented on any number of layered maps. The maps can be zoomed into and dragged around the screen.
- Real-time status indications:** At-a-glance real-time overview of all the system components maximizes overall operation availability, and helps reduce unintentional downtime.
- Multiple language support:** Use the XProtect Smart Client in your native language with support for 20 different languages.
- Failover servers:** A redundancy function that provides failover support for the management server (Windows Clustering) and for recording servers with automatic synchronization to ensure maximum uptime and minimize the risk of lost recording data.
- Versatile rule system:** A wizard-based rule engine enables easy set-up of scheduled or event-driven camera(s) and output actions with numerous options including support for time profiles.

XProtect Corporate Overview



"XProtect Corporate gives direct access to performance data for all system components including cameras and servers enabling system administrators to be proactive and maximize system availability."

John Blem,
CTO & Co-Founder of Milestone Systems

The open platform: a foundation for long-term success

Milestone XProtect acts as the powerful core of surveillance systems, providing the widest choice in third-party hardware components and integration with other business systems. It is the foundation enabling you to cost-effectively choose the best solutions for today and tomorrow.



About Milestone Systems

Founded in 1998, Milestone Systems is the global industry leader in true open platform IP video management software. The XProtect™ platform delivers powerful surveillance that is easy to manage, reliable and proven in thousands of customer installations around the world. With support for the widest choice in network hardware and integration with other systems, XProtect provides best-of-breed solutions to 'video enable' organizations – reducing costs, optimizing processes, protecting people and assets. Milestone software is sold through authorized and certified partners. For more information, visit: www.milestonesys.com.

Milestone Systems Headquarters, DK
Tel: +45 88 300 300

Milestone Systems Germany
Tel: +49 (0) 611 168 5597

Milestone Systems Japan
Tel: +81 (0) 3 3780 8749

Milestone Systems US
Tel: +1 503 350 1100

Milestone Systems France
Tel: +33 1 75 61 06 30

Milestone Systems UAE
Tel: +971 4 3641380 1

Milestone Systems Italy
Tel: +39 02 6179 7507

Milestone Systems Spain
Tel: +34 661 864 876

Milestone Systems Australia
Tel: +61 9653 9530

Milestone Systems UK
Tel: +44 (0) 1773 570709

Milestone Systems Singapore
Tel: +65 6225 2686

General inquiries:
info@milestonesys.com

Sales inquiries:
sales@milestonesys.com



The Open Platform Company